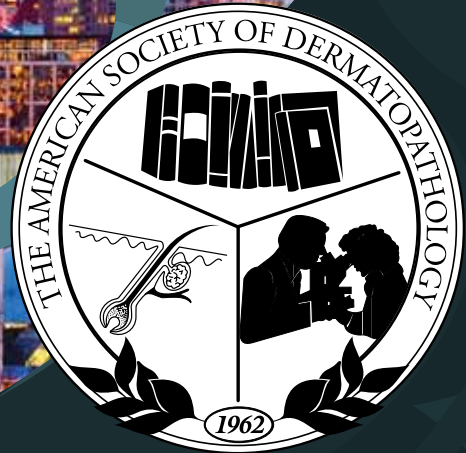




ASDP 48TH ANNUAL MEETING

The American Society of
Dermatopathology

Final Program



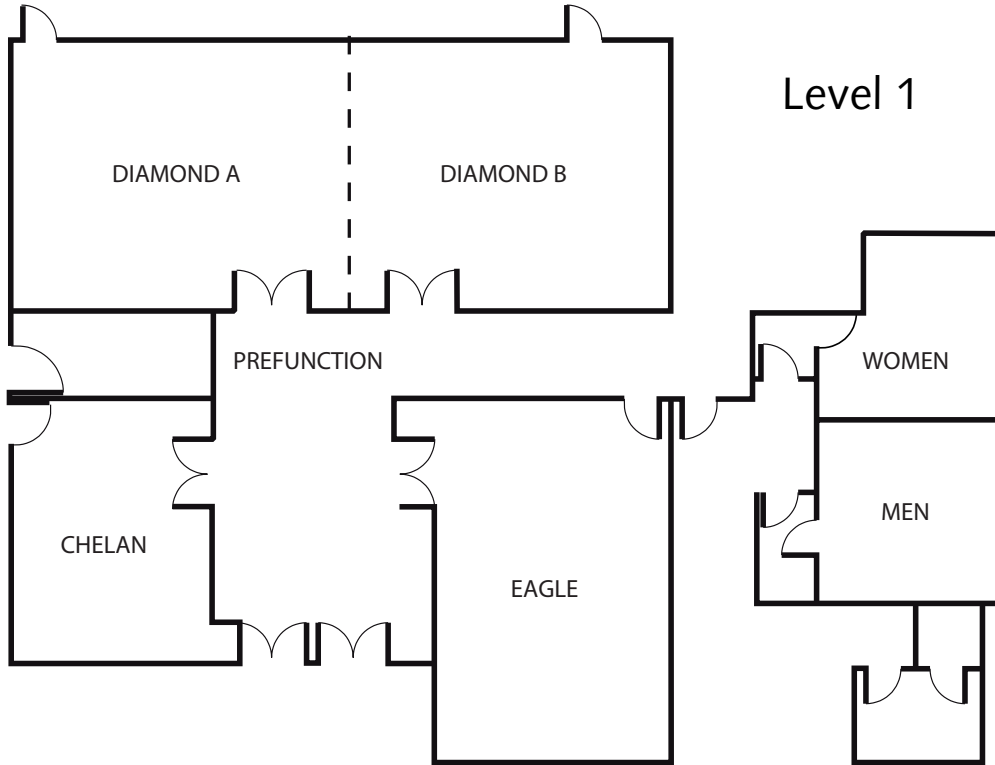
October 20–23, 2011
Sheraton Seattle
Seattle, WA USA

www.asdp.org



Sheraton Seattle

HOTEL



Level 2

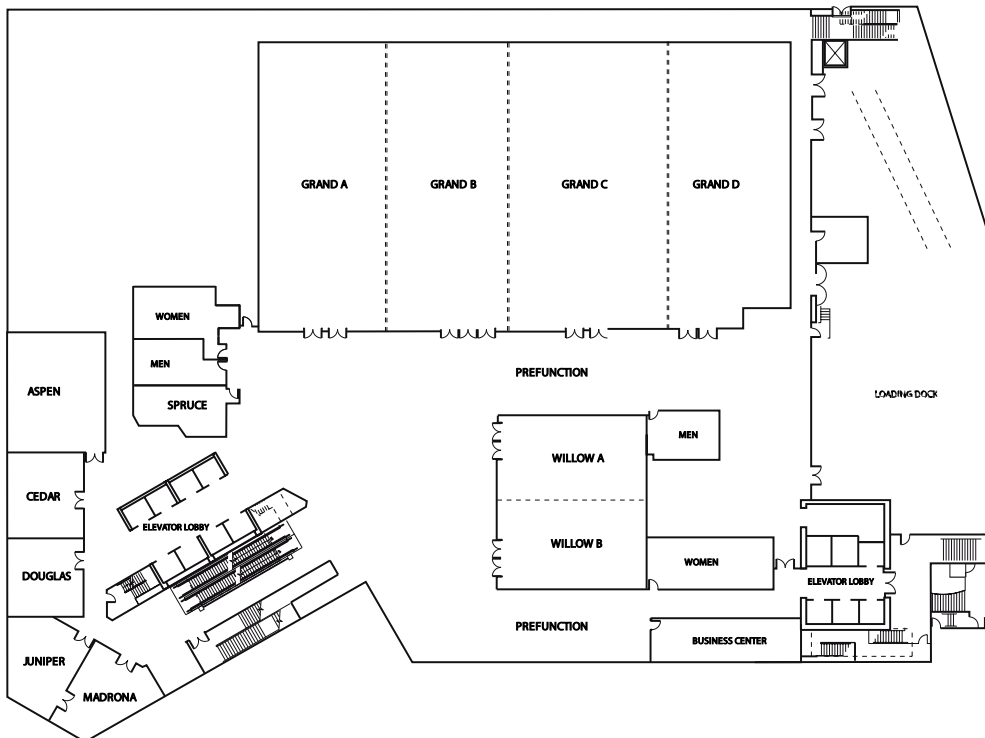


Table of Contents

General Information 2
Faculty Disclosures. 4
2011 Founders' and Nickel Award Recipients 5
Officers, Committees, Program Directors 7
Past Presidents, Past Secretary Treasurers, Past Editors 9
Committee Meetings 10

Programs-at-a-Glance

Annual Meeting. 11
Consultations in Dermatopathology 15
Self-Assessment in Dermatopathology 18

Exhibits and Support

Exhibitors and Supporters 20
Exhibit Floor Plan 21

Thursday, October 20

Daily Program 22

Friday, October 21

Daily Program 30
President's Reception & Banquet 37

Saturday, October 22

Daily Program 38
Helwig Memorial Lecture. 41
Evening Slide Symposium 43

Sunday, October 23

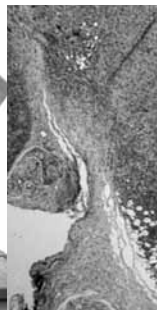
Daily Program 45
Index of Faculty. 48

**Submit your
evaluation and
CME Claim Forms
in a convenient
drop box located
near the ASDP
registration
center.**



**ASDP
48TH
ANNUAL
MEETING**

The American Society of
Dermatopathology



General Information

Continuing Medical Education

The American Society of Dermatopathology is accredited by the Accreditation Council for Continuing Medical Education to provide continuing medical education for physicians.

The American Society of Dermatopathology designates this live activity for a maximum of 35 *AMA PRA Category 1 Credits™*. Physicians should only claim credit commensurate with the extent of their participation in the activity.

The American Society of Dermatopathology Annual Meeting (Program #254100) is recognized by the American Academy of Dermatology for 35 AAD Recognized Category 1 CME Credits and may be used toward the American Academy of Dermatology's Continuing Medical Education Award.

Continuing Medical Education Policy

The American Society of Dermatopathology (ASDP) is accredited by the Accreditation Council for Continuing Medical Education (ACCME). As such, we are required to meet the ACCME's expectations for our practice of continuing medical education.

It is the policy of the ASDP to ensure balance, independence, objectivity and scientific rigor in all of its educational activities. Faculty participating in and planning the Annual Meeting must comply with all procedures governing disclosure. The ASDP has implemented a process where everyone in a position to control the content of an educational activity will present evidence-based content, disclose all relevant financial relationships with any commercial interest and discussion of unlabeled/investigational uses of a commercial product. In addition, presentations must be free of commercial bias and any information regarding commercial products/services must be based on scientific methods generally accepted by the medical community. Conflicts were resolved prior to this educational activity. Faculty who refused to disclose relevant financial relationships and discussion of unlabeled/investigational uses of a commercial product would have been disqualified from being a part of the planning and implementation of this CME activity.

Presenters who qualified for the implementation of this activity are required to verbally disclose to the audience, immediately prior to the scientific presentation, any of the relationships mentioned above. Faculty relationships are also disclosed to audiences in this program book.

CME Claims and Verification of Attendance

You will receive a CME Claim form in your registration packet on which you are to indicate the number of CME hours you are claiming for this educational activity. The number of CME credit available for each course is indicated by the course title in this program and on the CME Claim form. Complete this form and submit it along with your session evaluation forms to the ASDP meeting registration desk. You must return this form in order to receive appropriate CME credit. Your self-claimed CME credits will be recorded after the Annual Meeting and an official CME certificate will be mailed to you. Allow six to eight weeks for processing. Appropriate credit for attendance should be ascertained and reported by individual physicians to the particular state or medical society to which he/she belongs.

For those who are registered in the AAD CME Transcript/Award Program, you should log in to the AAD Online CME Transcript Program to enter credits for this AAD recognized Category 1 CME Program. ASDP's AAD program number is 254100.

Participant Objectives

The mission of the American Society of Dermatopathology is to teach, aid in the dissemination of knowledge, and encourage research, thus improving the quality of the practice of dermatopathology. The annual meeting is primarily an educational one, offering members, fellows, residents and medical students lectures on current topics in dermatopathology, interactive sessions at the microscope, a self-assessment course, and opportunities for poster and abstract presentations.

Overall learning objectives for the 2011 Annual Meeting:

- Define molecular studies and their evolving role in dermatopathology.
- Understand how histology, molecular studies and the application of new research techniques can be integrated to assist in the diagnosis of melanocytic lesions.
- Understand how histology, molecular studies and the application of new research techniques can be integrated to assist in the diagnosis of lymphoproliferative disorders.
- Identify critical elements that lead to the histologic diagnosis of melanoma.
- Differentiate essential diagnostic features that lead to the accurate histologic assessment of surgical margins.
- Recognize light microscopic findings that lead to a diagnosis of specific inflammatory dermatoses.
- Develop a diagnostic approach to the evaluation of biopsies from inflammatory skin lesions.

- Recognize opportunities for teledermatopathology.
- Recognize areas where new information gained from the presented cases has identified potential practice gaps and altered awareness of competence and performance related to the presented cases.
- Develop a differential diagnosis and diagnostic approach for select groups of diseases by personal instruction with an expert in the field.
- Self-assess your diagnostic acumen and implement this information into your daily practice.

Slide Library

Willow Room, 2nd Floor

Curator: Arthur K. Balin, MD, PhD, Sally Balin Medical Center for Dermatology & Cosmetic Surgery

The ASDP Slide Library opens Friday, Oct. 21, at 2 p.m. and will be open 24-hours-a-day through Sunday, Oct. 23, at 11 a.m.

One hundred selected cases from the continuously growing slide library will be available for microscopic examination. Cases are accompanied by the diagnosis and other relevant written information and references. The 2011 Slide Library handout with case summaries, diagnoses with discussion and references will be available inside the library room.

Upon completion of study, participants should be able to:

- Explain the histologic diagnosis of various skin conditions, including the use of ancillary studies, where appropriate.
- Interpret the histologic diagnosis of uncommon skin diseases.
- Critique cases that highlight diagnostic challenges.
- Apply morphological criteria to the differential diagnosis of cutaneous lesions.
- Develop appropriate differential diagnoses for a wide spectrum of tumors and dermatoses.

Membership Business Meeting

Saturday, October 22

**Washington State Convention Center
Ballroom 6C, Level 6**

12:15 – 1:15 p.m.

Members should attend the ASDP Membership Business Meeting luncheon on Saturday, Oct. 22. The annual report to the membership will be distributed to each meeting participant.

Directions to the Washington State Convention Center, Ballroom 6C, Level 6

Entrance to the Convention Center is on 7th Avenue and Pike Street. Walking directions are as follows:

- Exiting the Sheraton from the main lobby will place you on the corner of 6th Avenue and Pike Street.
- Take a right and head east up the hill one block to 7th Avenue and Pike Street.
- Cross 7th Avenue and the entrance to the Convention Center will be in front of you.
- Enter the building and take a left up the stairs. When you get to the water fountain take a right and head up the large bank of escalators.
- Take the escalators up to Level 4 and once you reach the top take a left and go through the glass doors.
- Continue straight up the escalators to get to Level 6 and Ballroom 6C.

Evening Slide Symposium Preview

Aspen Room, 2nd Floor

Open 24 Hours!

Preview the Evening Slide Symposium cases throughout the annual meeting and attend the Symposium Saturday evening. Case summaries are listed on page 44.

ASDP Career Center

Grand Ballroom Foyer (near registration desk)

The official ASDP career center is located on the Web site at www.asdp.org; however, the Society has employment boards located in the Grand Ballroom Foyer. Meeting registrants can post positions available or resumes for other attendees to peruse. Individuals are responsible for making copies. The Society will not make copies.

Faculty Disclosures of Relevant Financial Relationships

In keeping with ACCME standards, the following program faculty stated that they do not perceive having a conflict of financial interest that may have a direct bearing on the subject matter of the continuing education activity in which they are participants.

Zsolt B. Argenyi, MD	Earl Glusac, MD	Petra Milde, MD
Soon Bahrami, MD	Gary Goldenberg, MD	Diya F. Mutasim, MD
Terry L. Barrett, MD	Loren E. Golitz, MD	Rajiv M. Patel, MD
Wilma F. Bergfeld, MD, FACP, FAAD	Geoffrey J. Gottlieb, MD	Margot S. Peters, MD
Jag Bhawan, MD	Wayne Grayson, MD	Michael W. Piepkorn, MD
Steven D. Billings, MD	Joan Guitart, MD	Victor G. Prieto, MD, PhD
Scott Binder, MD	Ying Guo, MD	Melissa Pulitzer, MD
Francisco G. Bravo, MD	Kapil Gupta, MD	Ronald P. Rapini, MD
Alina Bridges, DO	Thomas Helm, MD	Vijaya Reddy, MD
Nooshin K. Brinster, MD	Molly A. Hinshaw, MD	Leslie Robinson-Bostom, MD
Klaus J. Busam, MD	Mai P. Hoang, MD	Beth S. Ruben, MD
J. Andrew Carlson, MD	Antoinette F. Hood, MD	Omar P. Sangueza, MD
David S. Cassarino, MD, PhD	Mark A. Hurt, MD	Jochen T. Schaefer, MD
Loren E. Clarke, MD	Laszlo Igali, MD	M. Angelica Selim, MD
Clay J. Cockerell, MD	Michael Ioffreda, MD	Rajendra Singh, MD
Lisa M. Cohen, MD	Mark Jacobson, MD	Kathleen J. Smith, MD
Deborah L. Cook, MD	Christine Jaworsky, MD	Garron Solomon, MD
Lynn D. Cooper, MD	Jacqueline M. Junkins-Hopkins, MD	Leonard C. Sperling, MD
Shawn E. Cowper, MD	Hideko Kamino, MD	Antonio Subtil, MD, MBA
April C. Deng, MD	Laszlo Karai, MD, PhD	Uma Sundram, MD, PhD
David J. DiCaudo, MD	Jinah Kim, MD, PhD	Gladys Telang, MD
Ahmet Dogan, MD	Gilles Landman, MD, PhD	Noreen M.G. Walsh, MD
Dirk M. Elston, MD	Philip E. LeBoit, MD	Sarah N. Walsh, MD
Ramsay S. Farah, MD	Lin Lin, MD, PhD	Roger H. Weenig, MD, MPH
Andrew L. Feldman, MD	Lori Lowe, MD	Wolfgang Weyers, MD
Tammie C. Ferringer, MD	George P. Lupton, MD	Artur Zembowicz, MD, PhD
Sylvie Freitag, MD	Meera Mahalingam, MD, PhD, FRCPath	
Maxwell A. Fung, MD	Timothy H. McCalmont, MD	
Pedram Gerami, BS, MD	Darius R. Mehregan, MD	
Frank Glass, MD		

The program faculty listed below disclosed the following information about their financial interests:

Faculty	Company	Affiliation/Relationship
Raymond L. Barnhill, MD	NeoGenomics Laboratories	Consultant
Boris C. Bastian, MD	Abbott Molecular Novartis AG	Research Support Consultant
Pedram Gerami, BS, MD	Abbott Molecular NeoGenomics Laboratories	Consultant Consultant
Daniel Jones, MD, PhD	Quest Diagnostics	Speaker Bureau
Heinz H. Kutzner, MD	Abbott Laboratories	Research Support
W. Clark Lambert, MD	Leica Corporation	Consultant
Alexander Lazar, MD	Novartis AG	Consultant/Speaker Bureau
Melissa P. Piliang, MD	Proctor & Gamble	Consultant

Annual Award Recipients

2011 Founders' Award



Raymond L. Barnhill, MD, MSc

Professor of Pathology
Co-Director, Dermatopathology
Department of Pathology and Laboratory Medicine
David Geffen School of Medicine at UCLA

The Founders' Award honors individuals who have made a significant contribution to the field of dermatopathology, which is recognized by dermatopathologists throughout the medical world. This year, the award will be presented to Dr. Raymond L. Barnhill, who is internationally renowned for his many original contributions to our knowledge of the biology and pathology of melanocytic neoplasms. Examples of his contributions include observations concerning angiogenesis and melanocytic lesions; work on the biology, criteria for, and grading of atypical (dysplastic) nevi; population-based studies on the histopathology, epidemiology, and prognostic indicators in cutaneous melanoma; observations concerning the biological nature, classification, and management of Spitzoid neoplasms, blue nevi, congenital nevi, pediatric melanoma, and desmoplastic melanoma; molecular studies of melanoma; and an initiative to characterize angiotropic mechanisms of melanoma and other solid tumor metastasis. He has held academic appointments at Yale, Harvard, Johns Hopkins, and George Washington University. More recent academic affiliations have included Saint-Louis Hospital, University of Paris, France, and presently Professor of Pathology and Co-Director of Dermatopathology at the University of California, Los Angeles. Dr. Barnhill is active in the North American and International Melanoma Pathology Study Groups. He has also participated in the World Health Organization (WHO) Melanoma Program and the EORTC Melanoma Group. He has participated in international education including the training of numerous residents and fellows. Dr. Barnhill is the author of numerous original articles, chapters and reviews, and the author, co-author, or editor of four books.

Previous Award Recipients

- | | |
|--|---|
| 2010 Daniel J. Santa Cruz, MD | 1997 Edward Wilson-Jones, FRCP, FRCPath |
| 2009 Antoinette F. Hood, MD | 1996 John R. Haserick, MD |
| 2008 Jag Bhawan, MD | 1995 Herbert Z. Lund, MD |
| 2007 Wilma F. Bergfeld, MD, FACP, FAAD | 1993 Richard J. Reed, MD |
| 2006 Ronald J. Barr, MD | 1992 John T. Headington, MD |
| 2005 David D. Weedon, AO, MD, FRCPA | 1991 Robert G. Freeman, MD |
| 2004 Philip E. LeBoit, MD | 1990 James H. Graham, MD |
| 2003 Ernst H. Beutner, PhD | 1989 A. Bernard Ackerman, MD |
| 2002 John C. Maize, MD | 1988 Wallace H. Clark, Jr., MD |
| 2001 Franz M. Enzinger, MD | 1987 Richard K. Winkelmann, MD |
| 2000 Waine C. Johnson, MD | 1986 Walter F. Lever, MD |
| 1999 Loren E. Golitz, MD | 1985 Elson B. Helwig, MD |
| 1998 Martin C. Mihm, Jr., MD | 1984 Hermann Pinkus, MD |

Annual Award Recipients

2011 Walter R. Nickel Award



Jennifer M. McNiff, MD

Professor of Dermatology and Pathology
Director of Dermatopathology, Yale University

The Walter R. Nickel Award for Excellence in Teaching of Dermatopathology is awarded annually to honor an individual who has made great contributions in dermatopathology education. This year the award is presented to Jennifer M. McNiff, MD professor of dermatology and pathology at Yale University School of Medicine and director of the Yale Dermatopathology Laboratory. Majoring in biology, Dr. McNiff graduated from Swarthmore College and completed her medical school training at the University of Vermont College of Medicine. She finished her anatomic and clinical pathology training at the University of Virginia Health Sciences Center and she pursued her dermatopathology fellowship training with Dr. James Patterson at the Medical College of Virginia. She also holds an honorary degree of Master of Arts Privatum at the Yale University School of Medicine. Currently, she serves as the President-Elect of The American Society of Dermatopathology and has served as a member of the executive committee of the International Society of Dermatopathology, a member of the board of directors of The American Society of Dermatopathology and a member of the Program Committee of The American Society of Dermatopathology. She has published more than 100 papers in peer-reviewed journals, has authored numerous chapters in books, and has participated in and directed many courses in national and international meetings. Dr. McNiff is an academic dermatopathologist who exemplifies the combination of a strong passion for teaching, keen diagnostic skills, a strong academic drive and superior mentorship skills. Her ability to express these characteristics in the setting of an unwavering positive attitude makes her truly unique.

Previous Award Recipients

2010 Hideko Kamino, MD
2009 James W. Patterson, MD
2008 Dirk M. Elston, MD
2007 Bennett L. Johnson, Jr., MD
2006 Jag Bhawan, MD
2005 Ronald P. Rapini, MD
2004 Bruce R. Smoller, MD
2003 Terence J. Harrist, MD
2002 N. Scott McNutt, MD
2001 Antoinette F. Hood, MD
2000 Wilma F. Bergfeld, MD, FACP, FAAD
1999 James H. Graham, MD
1998 A. Bernard Ackerman, MD
1997 Elson B. Helwig, MD

Congratulations to the 2011–2012 ASDP Mentorship in Dermatopathology Award Recipients

Katie Craven, MD
University of Virginia
Mentor: **Kevin White, MD**
Oregon Health & Science University

Terrence Keaney, MD
University of Miami
Mentor: **James W. Patterson, MD**
University of Virginia

Ilana S. Rosman, MD
Washington University, St. Louis
Mentor: **Beth S. Ruben, MD**
University of California, San Francisco

Namrate Setia, MD
Baystate Medical Center/Tufts University School of Medicine
Mentor: **Meera Mahalingam, MD, PhD, FRCPath**
Boston University School of Medicine

Jiong Zhang, MD
The University of Tennessee Health Science Center
Mentor: **Cynthia M. Magro, MD**
Weill Cornell Medical Center

**Officers and Committees, Past Presidents,
Past Secretary-Treasurers and Past Editor**

October 2010 – October 2011

Board of Directors

Zsolt B. Argenyi, MD, *President*
Jennifer M. McNiff, MD, *President-Elect*
Mark A. Hurt, MD, *Secretary-Treasurer*
Earl J. Glusac, MD, *Immediate Past-President*
Wilma F. Bergfeld, MD, FACP, FAAD,
Member-at-Large
Terry L. Barrett, MD, *Member-at-Large*
Nigel J. Ball, MD, FRCPC, *Member-at-Large*
Dirk M. Elston, MD, *Member-at-Large*
Victor G. Prieto, MD, PhD, *Member-at-Large*
Omar P. Sangueza, MD, *Member-at-Large*

Audit Committee

Joseph W. Olivere, II, MD, *Chair*
Steven D. Billings, MD
Jonathan Bass, MD
Bradley R. Peterson, MD
Vijaya B. Reddy, MD

Committee for International Partnering

Laszlo J. Karai, MD, PhD, *Chair*
Francisco G. Bravo, MD
Helmut Kerl, MD
Heinz H. Kutzner, MD
Cesare Massone
Christian Sander, MD
Bernhard W.H. Zelger, MD, MSc
Thomas N. Helm, MD
Patrick O.M. Emanuel, MD
Carlos Ricotti, MD
Carlos Torres-Cabala, MD

Continuing Education and Research Committee

Andrea L. Volk, MD, *Chair*
Stephen C. Somach, MD
Christine Jaworsky, MD
Melissa P. Piliang, MD
Gregory A. Hosler, MD, PhD

**Dermatopathology Fellowship Training
Directors' Committee**

Wilma F. Bergfeld, MD, FACP, FAAD, *Chair*

Ethics Committee

Wilma F. Bergfeld, MD, FACP, FAAD, *Chair*
Thomas N. Helm, MD
Mark A. Hurt, MD
Jennifer M. McNiff, MD
Jon A. Reed, MD

Finance Committee

Michael G. Hitchcock, MB, ChB, MBA, *Chair*
Mark A. Hurt, MD
Terry L. Barrett, MD
Paul B. Googe, MD

History Committee

Wilma F. Bergfeld, MD, FACP, FAAD, *Chair*
Thomas N. Helm, MD
Antoinette F. Hood, MD
Lyn M. Duncan, MD
Arnold L. Schroeter, MD
Curtis T. Thompson, MD
Lawrence E. Gibson, MD

Informatics Committee

Shawn E. Cowper, MD, *Co-Chair*
Philip J. Boyer, MD, PhD, *Co-Chair*
Tammie C. Ferringer, MD
Roger H. Weenig, MD, MPH

Maintenance of Certification Committee

Dirk M. Elston MD, *Chair*
Terry L. Barrett, MD
Tammie C. Ferringer, MD
Vilma C. Fabre, MD
Christine Ko, MD
Shane A. Meehan, MD
Jon A. Reed, MD
Claudia I. Vidal, MD, PhD
Antoinette F. Hood, MD, *Ex Officio*

Membership Committee

Robert M. Law, MD, *Chair*
Rosalie Elenitsas, MD
Michael D. Ioffreda, MD
Victor G. Prieto, MD, PhD
Jane L. Messina, MD

Mentorship Awards Committee

John T. Seykora, MD, PhD, *Chair*
Anne C. Lind, MD
Victor G. Prieto, MD, PhD
Glynis A. Scott, MD
Mary S. Stone, MD
Rossitza Lazova, MD, *Immediate Past-Chair*
Anita C. Gilliam, MD, *Ex Officio*

Peer Review Committee

Rajwant Malhotra, MD, *Chair*
Jon A. Reed, MD
Nancy S. House, MD
Christine Ko, MD
Gregory M. Wolgamot, MD, PhD

Program Committee

Dirk M. Elston, MD, *Chair*
Thomas N. Helm, MD
Lawrence E. Gibson, MD
Noreen M.G. Walsh, MD
Klaus J. Busam, MD

Strategic Planning Committee

Nigel J. Ball, MD, FRCPC, *Chair*
Steven D. Billings, MD
Tammie C. Ferringer, MD
Michael G. Hitchcock, MB, ChB, MBA
Heinz H. Kutzner, MD
Stephen C. Somach, MD

Young Physicians' Committee

Rajiv M. Patel, MD, *Co-Chair*
Melissa P. Piliang, MD, *Co-Chair*
Chris Jokinen, MD
Eleanor Ann Knopp, MD
Brian Pollack, MD, PhD
Puja K. Puri, MD
Brian F. Roehmholdt, MD
Arlene S. Rosenberg, MD
Najwa Somani, MD, FRCPC, FAAD
Harry L. Winfield, MD

Editor, *Journal of Cutaneous Pathology*

Timothy H. McCalmont, MD

Journal CME Program

Meera Mahalingam, MD, PhD, FRCPath, *Director*
Stephen C. Somach, MD
Andrea L. Volk, MD

**Quality Assurance & Laboratory
Proficiency Program Director**

Drazen M. Jukic, MD, PhD

Immunofluorescence Quality Assurance Testing

Ernst H. Beutner, PhD, *Director*
Richard W. Plunkett, PhD, *Co-director*

USCAP-ASDP Companion Meeting Course Director

Victor G. Prieto, MD, PhD

Slide Library Curator

Arthur K. Balin, MD, PhD

**Representative to the International League of
Dermatological Societies (ILDS)**

Joan Guitart, MD

**Representative to the International Committee for
Dermatopathology (ICDP)**

Jacqueline M. Junkins-Hopkins, MD

Representative to the American Registry of Pathology

C. Lisa Kauffman, MD

**Representative to the College of American
Pathologists (CAP)**

Vacant

**Representative to the American Academy of
Dermatopathology (AAD)**

Wilma F. Bergfeld, MD, FACP, FAAD

Headquarters Staff

Leah McCrackin, *Executive Director*
Maggie Substala, *Administrative Director*
Liz Freyn, *Meetings Director*
Chris Viglione, *Meetings Administration and
Exhibits Manager*
Patricia Sullivan, *Communications and Marketing Manager*

Past Presidents

Earl J. Glusac, MD	2009 – 2010
Wilma F. Bergfeld, MD, FACP, FAAD	2008 – 2009
Terry L. Barrett, MD	2007 – 2008
James W. Patterson, MD	2006
Clifton R. White, MD	2005
Hideko Kamino, MD	2004
Bruce R. Smoller, MD	2003
Thomas D. Horn, MD	2002
Jag Bhawan, MD	2001
Emily F. Omura, MD	2000
Neal S. Penneys, MD	1999
Ronald P. Rapini, MD	1998
George F. Murphy, MD	1997
William A. Caro, MD	1996
John C. Maize, MD	1995
Antoinette F. Hood, MD	1994
N. Scott McNutt, MD	1993
Beno Michel, MD	1992
Evan R. Farmer, MD	1991
Loren E. Golitz, MD	1990
Ronald J. Barr, MD	1989
Waine C. Johnson, MD	1988
Ken Hashimoto, MD	1987
Kurt S. Stenn, MD	1986
A. Bernard Ackerman, MD	1985
Martin H. Brownstein, MD	1984
John T. Headington, MD	1983
Amir H. Mehregan, MD	1982
Robert W. Goltz, MD	1981
Mark Allen Everett, MD	1980
Robert G. Freeman, MD	1979
George Ioannides, MD	1978
Richard K. Winkelmann, MD	1977
James H. Graham, MD	1976
Edward P. Cawley, MD	1975
Alvin J. Cox, MD	1974
John R. Haserick, MD	1973
Louis H. Winer, MD	1972
Walter R. Nickel, MD	1971
Daniel F. Richfield, MD	1970
Walter F. Lever, MD	1969
Francis Ellis, MD	1968
Herbert Z. Lund, MD	1967
Herman Beerman, MD	1966
Elson B. Helwig, MD	1965
Hermann Pinkus, MD	1964
Hamilton Montgomery, MD	1963

Past Secretary-Treasurers

Zsolt B. Argenyi, MD	2006 – 2009
James W. Patterson, MD	2001 – 2005
Thomas D. Horn, MD	1997 – 2001
Ronald P. Rapini, MD	1993 – 1996
Antoinette F. Hood, MD	1989 – 1992
Loren E. Golitz, M D	1985 – 1988
Kurt S. Stenn, MD	1982 – 1984
John T. Headington, MD	1978 – 1981
Robert G. Freeman, MD	1975 – 1977
James H. Graham, MD	1970 – 1974
Walter F. Nickel, MD	1963 – 1969

Past JCP Editors

James W. Patterson, MD	2005 – 2009
Bruce R. Smoller, MD	2000 – 2004
N. Scott McNutt, MD	1995 – 1999
Philip H. Cooper, MD	1990 – 1994
Evan R. Farmer, MD	1985 – 1989
Martin H. Brownstein, MD, Editor	1984
Amir H. Mehregan, MD, Assistant Editor	1984
Leopoldo F. Montes, MD, Editor	1982 – 1983
A. J. P. Klein-Szanto, MD, Assistant Editor	1982 – 1983
Leopoldo F. Montes, MD, Founder and 1st Editor	1974 – 1981

**Photographer
Acknowledgement:**

The ASDP gratefully acknowledges Dr. Arnold Schroeter for volunteering his time and efforts to serve as this year's official annual meeting photographer. Please smile when you see Dr. Schroeter aiming his camera at you.

Committee Meetings Schedule

All committee meeting rooms are located on the first floor, unless otherwise noted. Committee meeting attendance is by invitation only.

Thursday, October 20

3:30 p.m. – 6:00 p.m.	Board of Directors	Issaquah, 3rd Floor Union Street Tower
-----------------------	--------------------	---

Friday, October 21

7:00 a.m. – 8:00 a.m.	Audit Committee	Eagle
	Committee for International Partnering	Chelan
	Continuing Education and Research Committee	Diamond A
8:00 a.m. – 9:00 a.m.	History Committee	Eagle
	Informatics Committee	Chelan
	Mentorship Awards Committee	Diamond A
9:00 a.m. – 11:00 a.m.	Ethics Committee	Eagle
Noon – 1:30 p.m.	Dermatopathology Fellowship Training Directors	Cirrus, 35th Floor Pike Street Tower

Saturday, October 22

7:00 a.m. – 8:00 a.m.	Strategic Planning Committee	Eagle
	JCP Editorial Board	Diamond A/B
8:00 a.m. – 9:00 a.m.	Membership Committee	Eagle
	Young Physicians' Committee	Chelan
9:00 a.m. – 10:00 a.m.	Peer Review Committee	Eagle
	Finance Committee	Chelan
10:00 a.m. – 11:00 a.m.	Maintenance of Certification Committee	Eagle
4:30 p.m. – 6:00 p.m.	Program Committee	Diamond A/B

Sunday, October 23

6:45 a.m. – 8:30 a.m.	Board of Directors and Committee Chair Roundtable	Diamond A/B
-----------------------	---	-------------

Annual Meeting Program Schedule

Unless noted otherwise, all sessions are located on the 2nd floor.

Thursday, October 20

7:00 a.m. – 7:30 p.m.	Registration and Information	Grand Ballroom Foyer
7:00 a.m. – 7:30 p.m.	Speaker Ready Room	Madrona
8:00 a.m. – Noon	Exhibit Set-up	Grand Ballroom Foyer
8:00 a.m. – 1:00 p.m.	Poster Session #1 Set-up	Grand Ballroom A/B
8:45 a.m. – Noon	Board Review Course	Diamond
9:00 a.m. – 10:15 a.m.	Consultation 100	Juniper
	Consultation 101	Douglas
	Consultation 102	Cedar
9:00 a.m. – Noon	Self-Assessment Session A	Willow
10:45 a.m. – Noon	Consultation 103	Juniper
	Consultation 104	Douglas
	Consultation 105	Cedar
1:00 p.m. – 2:15 p.m.	Consultation 106	Juniper
	Consultation 107	Douglas
	Consultation 108	Cedar
1:00 p.m. – 3:00 p.m.	Young Physicians' Forum: Life's a Bowl of Cherries If You Don't Choke on the Pits	Grand Ballroom C/D
1:00 p.m. – 4:00 p.m.	Self-Assessment Session B	Willow
1:00 p.m. – 6:30 p.m.	Exhibit Viewing	Grand Ballroom Foyer
1:00 p.m. – 10:00 p.m.	Poster Session #1 Viewing	Grand Ballroom A/B
Opens at 1:00 p.m.	Evening Slide Symposium Preview – Open 24-hours!	Aspen
2:45 p.m. – 4:00 p.m.	Consultation 109	Juniper
	Consultation 110	Douglas
	Consultation 111	Cedar
3:15 p.m. – 4:45 p.m.	Oral Abstract Session #1	Grand Ballroom C/D
3:30 p.m. – 6:00 p.m.	Board of Directors' Meeting	Issaquah, 3rd Floor Union Street Tower
5:00 p.m. – 6:30 p.m.	Duel in Dermatopathology	Grand Ballroom C/D
6:45 p.m. – 9:00 p.m.	Short Course I: Inflammatory and Neoplastic Dermatopathology with Focus on the Breast	Grand Ballroom C/D
9:00 p.m. – 10:00 p.m.	Young Physicians' Reception and Art Show	Cirrus, 35th Floor Pike Street Tower

Friday, October 21

Open 24-hours	Evening Slide Symposium Preview	Aspen
6:30 a.m. – 8:00 a.m.	Continental Breakfast	Grand Ballroom Foyer
6:30 a.m. – 4:30 p.m.	Poster Session #1 Viewing	Grand Ballroom A/B
6:30 a.m. – 5:00 p.m.	Registration and Information	Grand Ballroom Foyer
6:30 a.m. – 5:00 p.m.	Speaker Ready Room	Madrona
7:00 a.m. – 8:15 a.m.	Consultation 200	Juniper
	Consultation 201	Douglas
	Consultation 202	Cedar
7:00 a.m. – 10:00 a.m.	Self-Assessment Session C	Willow

Annual Meeting Program Schedule

Unless noted otherwise, all sessions are located on the 2nd floor.

Friday, October 21 (continued)

8:00 a.m. – Noon	Short Course II: Melanocytic Lesions and Sacred Cows: What is True and What is Dogma?	Grand Ballroom C/D
8:45 a.m. – 10:00 a.m.	Consultation 203 Consultation 204 Consultation 205	Juniper Douglas Cedar
9:00 a.m. – 5:00 p.m.	Exhibit Viewing	Grand Ballroom Foyer
9:45 a.m. – 10:15 a.m.	Refreshment Break	Grand Ballroom Foyer
10:30 a.m. – 11:45 a.m.	Consultation 206 Consultation 207 Consultation 208	Juniper Douglas Cedar
10:30 a.m. – 1:30 p.m.	Self-Assessment Session D	Willow
Noon – 1:00 p.m.	Box Lunch	Grand Ballroom Foyer
Noon – 1:30 p.m.	Dermatopathology Fellowship Training Directors' Meeting	Cirrus, 35th Floor Pike Street Tower
12:30 p.m. – 2:00 p.m.	Oral Abstract Session #2	Grand Ballroom C/D
1:00 p.m. – 2:15 p.m.	Consultation 209 Consultation 210 Consultation 211	Juniper Douglas Cedar
Opens at 2:00 p.m.	Slide Library – Open 24-hours!	Willow
2:45 p.m. – 4:00 p.m.	Consultation 212 Consultation 213 Consultation 214	Juniper Douglas Cedar
3:00 p.m. – 6:00 p.m.	Herman Pinkus Memorial Basic Science Course	Grand Ballroom C
3:00 p.m. – 7:00 p.m.	Self-Assessment Discussion	Grand Ballroom D
4:30 p.m. – 5:00 p.m.	Poster Session #1 Defense	Grand Ballroom A/B
4:30 p.m. – 5:00 p.m.	Refreshment Break	Grand Ballroom Foyer
4:30 p.m. – 5:45 p.m.	Mini Course: Teledermatopathology – An Introduction to the Future	Diamond A/B, 1st Floor
4:30 p.m. – 5:45 p.m.	Consultation 215 Consultation 216 Consultation 217	Juniper Douglas Cedar
5:00 p.m. – 7:00 p.m.	Poster Session #1 Dismantle	Grand Ballroom A/B
7:00 p.m. – 10:00 p.m.	Poster Session #2 Set-up	Grand Ballroom A/B
7:00 p.m. – 11:00 p.m.	President's Reception and Banquet	Columbia Tower Club

Saturday, October 22

Open 24-hours	Slide Library	Willow
Open 24-hours	Evening Slide Symposium Preview	Aspen
6:00 a.m. – 7:00 a.m.	Poster Session #2 Set-up	Grand Ballroom A/B
6:30 a.m. – 8:00 a.m.	Continental Breakfast	Grand Ballroom Foyer
6:30 a.m. – 5:00 p.m.	Registration and Information	Grand Ballroom Foyer
6:30 a.m. – 5:00 p.m.	Speaker Ready Room	Madrona
7:00 a.m. – 8:15 a.m.	Consultation 300	Juniper

Annual Meeting Program Schedule

Unless noted otherwise, all sessions are located on the 2nd floor.

Saturday, October 22 (continued)

Consultation 301	Douglas	
	Consultation 302	Cedar
7:00 a.m. – 10:00 p.m.	Poster Session #2 Viewing	Grand Ballroom A/B
8:00 a.m. – Noon	Short Course III: Mistakes that Matter	Grand Ballroom C/D
8:45 a.m. – 10:00 a.m.	Consultation 303	Juniper
	Consultation 304	Douglas
	Consultation 305	Cedar
9:00 a.m. – 4:00 p.m.	Exhibit Viewing	Grand Ballroom Foyer
10:00 a.m. – 10:30 a.m.	Refreshment Break	Grand Ballroom Foyer
10:30 a.m. – 11:45 a.m.	Consultation 306	Juniper
	Consultation 307	Douglas
	Consultation 308	Cedar
12:15 p.m. – 1:30 p.m.	Annual Membership Business Meeting and Luncheon	Washington State Convention Center Room 6C, 4th Floor
1:30 p.m. – 2:45 p.m.	Consultation 309	Juniper
	Consultation 310	Douglas
	Consultation 311	Cedar
1:35 p.m. – 1:45 p.m.	Duel in Dermatopathology Awards Presentation	Grand Ballroom C/D
1:45 p.m. – 2:45 p.m.	Elson B. Helwig Memorial Lecture	Grand Ballroom C/D
2:45 p.m. – 3:15 p.m.	President's Address	Grand Ballroom C/D
3:15 p.m. – 3:45 p.m.	Refreshment Break	Grand Ballroom Foyer
3:15 p.m. – 3:45 p.m.	Poster Session #2 Defense	Grand Ballroom A/B
3:30 p.m. – 4:45 p.m.	Consultation 312	Juniper
	Consultation 313	Douglas
	Consultation 314	Cedar
4:00 p.m. – 6:00 p.m.	Fellows' Case Presentations	Grand Ballroom C/D
4:00 p.m.	Exhibit Dismantle	Grand Ballroom Foyer
4:30 p.m. – 6:00 p.m.	Program Committee Meeting	TBD
5:15 p.m. – 6:30 p.m.	Consultation 315	Juniper
	Consultation 316	Douglas
	Consultation 317	Cedar
6:15 p.m. – 9:30 p.m.	Evening Slide Symposium	Grand Ballroom C/D

Sunday, October 23

6:30 a.m. – 8:00 a.m.	Continental Breakfast	Grand Ballroom Foyer
6:30 a.m. – 10:00 a.m.	Poster Session #2 Viewing	Grand A/B
6:30 a.m. – Noon	Registration and Information	Grand Ballroom Foyer
6:30 a.m. – Noon	Speaker Ready Room	Madrona
6:45 a.m. – 8:30 a.m.	Board of Directors and Committee Chair Roundtable	Diamond A/B
7:00 a.m. – 8:15 a.m.	Consultation 400	Juniper
	Consultation 401	Douglas
	Consultation 402	Cedar

Annual Meeting Program Schedule

Unless noted otherwise, all sessions are located on the 2nd floor.

Sunday, October 23 (continued)

7:30 a.m. – 8:30 a.m.	Oral Abstract Session #3	Grand Ballroom C/D
8:30 a.m. – 8:45 a.m.	Physician-in-Training Abstract & Poster Awards Presentation	Grand Ballroom C/D
8:30 a.m. – 9:45 a.m.	Consultation 403	Juniper
	Consultation 404	Douglas
	Consultation 405	Cedar
8:45 a.m. – Noon	Short Course IV: What Is It, Really?	Grand Ballroom C/D
10:00 a.m. – Noon	Poster Session #2 Dismantle	Grand Ballroom A/B
10:15 a.m. – 11:30 a.m.	Consultation 406	Juniper
	Consultation 407	Douglas
	Consultation 408	Cedar
Closes at 11:00 a.m.	Slide Library	Willow
Closes at 11:00 a.m.	Slide Viewing from Evening Slide Symposium	Aspen
Noon	Meeting Adjourns	



ASDP Art Show

Sponsored by the Young Physicians' Committee

View the artistic talents of your colleagues!

"The most beautiful experience we can have is the mysterious—the fundamental emotion which stands at the cradle of true art and true science."

-Albert Einstein

The Young Physicians' Committee is sponsoring an event showcasing the artistic talents of the ASDP during the Young Physicians' Reception held Thursday, October 20 from 9-10 p.m. Be sure to stop by and view the exhibition.

This multimedia event includes oil and acrylic paintings, watercolors, sculpture, photography, woodcarvings, etchings, glassblowing, ceramics, jewelry, calligraphy paintings, pottery, woodcuts, wood burning, and lithography.

Consultations in Dermatopathology Schedule

1.25 CME credit per course

Tickets are required to enter each course.

All consultation rooms are located on the 2nd floor.

All courses use a 10-headed microscope with a class size of nine. Generally, there is a period of study at individual microscopes followed by interactive work with the course director.

Thursday, October 20

	Course	Director	Course Title	Room
9:00 a.m.	100	<i>Lawrence E. Gibson, MD</i>	Cutaneous Vasculitis: Selected Cases with Emphasis on Clinicopathologic Correlation	Juniper
	101	<i>Mark A. Hurt, MD</i>	Hair Follicle Proliferations — My Cases and Yours	Douglas
	102	<i>W. Clark Lambert, MD, PhD</i>	Dermatitis vs. Parapsoriasis/ Prelymphoma vs. Mycosis Fungoides/Cutaneous T Cell Lymphoma - Skin Rash vs. Systemic Cancer	Cedar
10:45 a.m.	103	<i>Zsolt B. Argenyi, MD</i>	Diagnostic Approach to Problematic Neural Tumors	Juniper
	104	<i>David J. DiCaudo, MD</i>	Look-alikes in Neoplastic Dermatopathology	Douglas
	105	<i>Pedram Gerami, BS, MD</i>	Understanding and Interpreting FISH Results Including the Pitfalls When Evaluating Melanocytic Neoplasms	Cedar
1:00 p.m.	106	<i>Mai P. Hoang, MD</i>	Cutaneous Reactions to Novel Therapeutics	Juniper
	107	<i>Jacqueline M. Junkins-Hopkins, MD</i>	Instructive Cases in Cutaneous Lymphoma	Douglas
	108	<i>Uma Sundram, MD, PhD</i>	Difficult Cutaneous Lymphoma Cases from the Stanford Case Files	Cedar
2:45 p.m.	109	<i>David S. Cassarino, MD, PhD</i>	Inflammatory Conditions that Can Mimic Atypical or Malignant Hematolymphoid Proliferations	Juniper
	110	<i>Jinah Kim, MD, PhD</i>	Cutaneous Manifestations of Systemic Disease: Morphology, Molecules and More	Douglas
	111	<i>Mai P. Hoang, MD</i>	Role of Immunohistochemistry in Diagnosing Tumors of Cutaneous Appendages	Cedar

Consultations in Dermatopathology Schedule (cont.)

Friday, October 21

	Course	Director	Course Title	Room
7:00 a.m.	200	<i>Hideko Kamino, MD</i>	Interesting Fibrohistiocytic Proliferations	Juniper
	201	<i>Gary Goldenberg, MD</i>	Dermatopathology of Rheumatologic Diseases	Douglas
	202	<i>Jochen T. Schaefer, MD</i>	Who is Who in the WHO/EORTC Classification of Cutaneous B-cell Lymphoma?	Cedar
8:45 a.m.	203	<i>Rajiv M. Patel, MD</i>	A Practical Pattern-based Approach to Cutaneous Soft Tissue Tumors	Juniper
	204	<i>Geoffrey J. Gottlieb, MD</i>	Melanoma or Not? Bring Your Own Slides	Douglas
	205	<i>Soon Bahrami, MD</i>	Lessons From Louisville	Cedar
10:30 a.m.	206	<i>Beth S. Ruben, MD</i>	Nail Pathology	Juniper
	207	<i>J. Andrew Carlson, MD</i>	Vasculitis and Lymphatic Diseases	Douglas
	208	<i>Dirk M. Elston, MD</i>	Infections and Infestations	Cedar
1:00 p.m.	209	<i>Steven D. Billings, MD</i>	Diagnostic Challenges in Cutaneous Soft Tissue Tumors	Juniper
	210	<i>Lynn D. Cooper, MD</i>	A Fundamental/Algorithmic Approach to Atypical Lymphoid Infiltrates: Benign vs. Malignant	Douglas
	211	<i>David S. Cassarino, MD</i>	Atypical and Malignant Adnexal Neoplasms	Cedar
2:45 p.m.	212	<i>Tammie C. Ferringer, MD</i>	Defining Panniculitis: Chicken Soup or Cheerios?	Juniper
	213	<i>Beth S. Ruben, MD</i>	Nail Pathology	Douglas
	214	<i>Nooshin K. Brinster, MD</i>	Hot Cases from the South	Cedar
4:30 p.m.	215	<i>Antonio Subtil, MD, MBA</i>	Cutaneous B-Cell Lymphoma	Juniper
	216	<i>M. Angelica Selim, MD</i>	Current Issues in Vulvar Pathology	Douglas
	217	<i>Dirk M. Elston, MD</i>	Tough Melanocytic Lesions	Cedar

Saturday, October 22

7:00 a.m.	300	<i>Loren E. Golitz, MD</i>	Pediatric Dermatopathology	Juniper
	301	<i>Mark Jacobson, MD</i>	The Titanic: Survival in the Age of the Superficial Biopsy	Douglas
	302	<i>Terry L. Barrett, MD</i>	Nevi and Malignant Melanoma from Specific Anatomic Sites	Cedar
8:45 a.m.	303	<i>Meera Mahalingam, MD, PhD, FRCPath</i>	Emerged and Emerging Entities in Dermatopathology: A Comparison of Histopathologically Similar New and Old Entities	Juniper

Consultations in Dermatopathology Schedulee (cont.)

Saturday, October 22 (cont.)

	Course	Director	Course Title	Room
8:45 a.m. (cont.)	304	<i>George P. Lupton, MD</i>	Malignant Melanoma: Yes or No?	Douglas
	305	<i>Wayne Grayson, MD</i>	HIV/AIDS-related Dermatopathology Revisited	Cedar
10:30 a.m.	306	<i>Leonard C. Sperling, MD</i>	Advanced Alopecia	Juniper
	307	<i>Leslie Robinson-Bostom, MD</i>	Rocky Cases from the Rhode Island Coast	Douglas
	308	<i>Timothy H. McCalmont, MD</i>	Cutaneous Spindle Cell Lesions by Light and IPX	Cedar
1:30 p.m.	309	<i>Steven D. Billings, MD</i>	Diagnostic Challenges in Cutaneous Soft Tissue Tumors	Juniper
	310	<i>Omar P. Sanguenza, MD</i>	Vascular Lesions	Douglas
	311	<i>Kapil Gupta, MD</i>	Lessons from the Dermatology Clinic: Diagnostic Approach for Unique Inflammatory Cases and Their Reportage	Cedar
3:30 p.m.	312	<i>Kathleen J. Smith, MD</i>	Staging Tools and Molecular Studies and Their Application for Evaluation and Therapy of Melanocytic Neoplasms	Juniper
	313	<i>Francisco G. Bravo, MD</i>	New and Emerging Infectious Diseases	Douglas
	314	<i>Klaus J. Busam, MD</i>	Interesting Cases from New York	Cedar
5:15 p.m.	315	<i>Jag Bhawan, MD</i>	Mimickers in Dermatopathology	Juniper
	316	<i>Raymond L. Barnhill, MD</i>	The Difficult Melanocytic Lesion	Douglas
	317	<i>Clay J. Cockerell, MD</i>	Challenging Clinicopathologic Correlations	Cedar

Sunday, October 23

7:00 a.m.	400	<i>Maxwell A. Fung, MD</i>	Panniculitis and Other Puzzles	Juniper
	401	<i>Artur Zembowicz, MD, PhD</i>	Update on Dermal Dendritic Melanocytic Proliferations	Douglas
	402	<i>Sylvie Freitag, MD</i>	Selected Cases in Pediatric Dermatopathology	Cedar
8:30 a.m.	403	<i>Joan Guitart, MD</i>	Cutaneous Lymphocytic Infiltrates: Your Cases and Mine	Juniper
	404	<i>Shawn E. Cowper, MD</i>	Basic Alopecia	Douglas
	405	<i>Jinah Kim, MD, PhD</i>	Unusual Cutaneous Lymphomas with Clinical Correlation	Cedar
10:15 a.m.	406	<i>Molly A. Hinshaw, MD</i>	Oral Pathology	Juniper
	407	<i>Victor G. Prieto, MD, PhD</i>	Diagnostic Pearls and Pitfalls in Sentinel Lymph Nodes for Melanoma: Clinical Implications	Douglas
	408	<i>Philip E. LeBoit, MD</i>	Lessons I Have Learned From Difficult Cases	Cedar

MOC-DP Self-Assessment in Dermatopathology Schedule

Tickets are required to enter each session. Handouts will be provided in the session. Unless noted otherwise, all session rooms are located on the 2nd floor.

Course Director: Thomas N. Helm, MD
State University of New York at Buffalo

6.5 hours CME credit
(3 hours for sessions A, B, C or D; 3.5 hours for discussion)

Participants will have the opportunity to study 75 challenging slides representing a wide range of inflammatory and neoplastic diseases, during one of four identical sessions. Each of the study sessions will begin with examination of 50 advanced dermatopathology slides, followed by 25 core knowledge slides. Subsequently, there will be a single discussion session during which faculty members will review the diagnostic features of each case, as well as the differential diagnosis. This discussion will be held Friday, Oct. 21, from 3 to 7 p.m.

The ASDP Self-Assessment in Dermatopathology course offers Maintenance of Certification in Dermatopathology (MOC-DP) credit to satisfy the American Board of Dermatology (ABD) and the American Board of Pathology (ABP) MOC requirements.

ABD SA – The ASDP is a provider of Self-Assessments (SAs) for the Maintenance of Certification program of the American Board of Dermatology (ABD). The ASDP Self-Assessment in Dermatopathology course offers up to 100 MOC SA question credits. Participants must take and pass the exam in order to claim SA points.

ABP SAMs – The ASDP is a provider of Self-Assessment Modules (SAMs) for Part II of the Maintenance of Certification program of the American Board of Pathology (ABP). The ASDP Self-Assessment in Dermatopathology course offers six and a half (6.5) SAMs. Participants must take and pass the exam in order to claim SAMs.

Thursday, October 20

9:00 a.m. – Noon	Session A <i>(Note: This session conflicts with Consultations 100, 101, 102, 103, 104 and 105)</i>	Willow
1:00 p.m. – 4:00 p.m.	Session B <i>(Note: This session conflicts with Consultations 106, 107, 108, 109, 110 and 111)</i>	Willow

Friday, October 21

7:00 a.m. – 10:00 a.m.	Session C <i>(Note: This session conflicts with Consultations 200, 201, 202, 203, 204 and 205)</i>	Willow
10:30 a.m. – 1:30 p.m.	Session D <i>(Note: This session conflicts with Consultations 206, 207, 208, 209, 210 and 211)</i>	Willow
3:00 p.m. – 7:00 p.m.	Self-Assessment Discussion <i>(Note: This session conflicts with Consultations 212, 213, 214, 215, 216 and 217)</i>	Grand Ballroom D

Self-Assessment in Dermatopathology Schedule (cont.)

Faculty:

Wilma F. Bergfeld, MD, FACP, FAAD, *Cleveland Clinic*

Steven D. Billings, MD, *Cleveland Clinic*

Loren E. Clarke, MD, *Penn State Milton S. Hershey Medical Center/College of Medicine*

Deborah L. Cook, MD, *Fletcher Allen Health Care, University of Vermont College of Medicine*

April C. Deng, MD, *University of Massachusetts Medical School*

Ramsay S. Farah, MD, *The Hill Medical Center*

Ying Guo, MD, *Ackerman Academy of Dermatopathology*

Thomas N. Helm, MD, *State University of New York at Buffalo*

Michael D. Ioffreda, MD, *The Pennsylvania State University*

Heinz H. Kutzner, MD, *Dermatopathologie Friedrichshafen*

Lin Lin, MD, PhD, *Buffalo Medical Group*

Meera Mahalingam, MD, PhD, FRCPath, *Boston University School of Medicine*

Diya F. Mutasim, MD, *University of Cincinnati*

Rajiv M. Patel, MD, *University of Michigan*

Melissa P. Piliang, MD, *Cleveland Clinic*

Ronald P. Rapini, MD, *University of Texas Houston Medical School*

Sarah N. Walsh, MD, *Cutaneous Pathology WCP Laboratories, Inc.*

Upon completion of this session, participants should be able to:

- Recognize the key light microscopic features of common, rare and unusual entities without immunoperoxidase staining.
- Expand diagnostic skills by increasing familiarity with a variety of skin conditions.
- Differentiate between diseases with similar or overlapping histologic findings during microscopic sign out sessions.
- Incorporate new information gained from the presented cases into their scopes of dermatopathology practice.

**Visit the ASDP Career Center to view
employment position listings.
*Grand Ballroom Foyer***

Exhibitors

Dermpath Diagnostics

Booth 9 & 10

Contact: Dawn Farone

7111 Fairway Drive, Suite 400

Palm Beach Gardens, FL 33418

Phone: +1-561-712-7380

Fax: +1-561-712-7376

E-mail: dfarone@dermpathdiagnostics.com

Dermpath Diagnostics is exclusively focused on providing exceptional dermatopathology services. Our commitment to dermatopathology is backed by an unrivaled team of over 90 board-certified dermatopathologists, advanced diagnostic technologists and unparalleled clinician/patient support. Our mission is to provide accurate, clear and prompt diagnoses. We also strive to develop strong relationships with our referring clinicians, and we are fully committed to assisting you in providing the best health care for every patient.

Elsevier

Booths 13 & 14

Contact: Ryan Woodford

10898 El Mar Ave.

Fountain Valley, CA 92708

Phone: +1-949-929-4717

E-mail: r.woodford@elsevier.com

Lippincott Williams & Wilkins (LWW)

Booth 11

Contact: Jay Oestriech

4816 139th Place SE

Snohomish, WA 98296

Phone: +1-425-379-9354

Fax: +1-425-379-9354

E-mail: jay.oestriech@wolterskluwer.com

Lippincott Williams & Wilkins (LWW) is a leading international publisher of professional health information for physicians, nurses, specialized clinicians and students. LWW provides essential information for healthcare professionals in print and electronic formats, including textbooks, journals, CD-ROM, and via Intranets and the Internet. LWW is also representing Thieme and Springer-Verlag publications.

Lucid, Inc. –

Booth 8

Contact: Christian Costa

2320 Brighton Henrietta T/L Road

Rochester, NY 14623

Phone: +1-585-239-9800

Fax: +1-585-239-9806

E-mail: ccosta@lucid-tech.com

Lucid is a company dedicated to assisting dermatopathologists in coming closer to the point and time of care by using advanced technology and superior imaging tools. Using Lucid's FDA-cleared products, dermatopathologists can receive images of lesions suspicious for skin cancer from existing and new dermatology clients. These images are delivered rapidly and securely using VivaNet, an FDA-exempt, HIPPA-compliant network that routes the images from the dermatologist's office to the dermatopathologist for interpretation. Visit our booth to find out how to make your practice stand out by offering VivaScope Interpretation Services as a part of your practice's professional services.



NeoGenomics Laboratories

Booth 7

Contact: Matt Moran

12701 Commonwealth Drive, Suite 9

Fort Myers, FL 33913

E-mail: mmoran@neogenomics.com

NeoGenomics Laboratories is a high complexity cancer genetics laboratory servicing the anatomic pathology and oncology markets. Our testing services are designed to answer questions related to diagnosis, prognosis and therapy selection for hematologic and solid tumor cancers.

Netsoft Inc.

Booth 5

Contact: William Hughes

2156 West Park Court

Suite E

Stone Mountain, GA 60087

Phone: +1-678-325-2909

Fax: +1-678-325-2908

E-mail: sales@netsoftusa.com

IntelliPath delivers leading-edge technology and performance in a highly flexible package and adapts to the way you run your business. This scalable, multi-platform application includes specimen tracking, report processing, imaging, voice recognition, regulatory compliance reporting and report transfer via print, fax, email and internet. With interfaces to over 20 different EMR vendors and a completely integrated billing package, IntelliPath is "the way to work smarter".

NovoVision, Inc.

Booth 12

Contact: **Richard Callahan**
 301 N. Harrison St., Suite 384
 Princeton, NJ 08540
 Phone: +1-877-NOVO-123
 Fax: +1-732-329-2420
 E-mail: rcallahan@novovision.com

NovoPath™, an easy-to-use- Anatomic Pathology Information Management/Reporting System for processing Derm, Surgical, Cytology, Molecular and Autopsy specimens, includes all industry standard features. Also standard are features such as Advanced Security, Image Capture, Slide Loaner/Tracking, Synoptic Reporting, daily Work Lists and over 125 commonly used pathology/billing reports. Web Outreach (order entry, resulting, interfacing), as well as dedicated modules for Specimen Tracking, Workflow Management, and Billing are representative of Novovision's modular approach to keep the system affordable. Direct interfacing to an array of with HL7 Compliant EMRs, HIS and Practice Management Systems will enhance your competitive edge.

Southwest Medical Books

Booths 15 & 16

Contact: **Kelly Dusenberry**
 3473 Sitio Borde
 Carlsbad, CA 92009
 Phone: +1-760-944-9906
 Fax: +1-760-944-9926
 E-mail: Kellydusenberry@gmail.com

Southwest Medical Books brings over 23 years of experience in direct selling Pathology textbooks to you. We discount all major publishers and offer free shipping in the United States. Come by our booths and see the latest in DermPath references that will help you update your library.

Vachette Pathology

Booth 4

Contact: **Mick Raich**
 111 Giles, Suite C
 Bilssfield, MI 49228
 Phone: +1-866-407-0763
 Fax: +1-517-486-4263
 E-mail: mraich@vachettepathology.com

"Who's Watching Your Wallet?" Many pathologists and laboratories are suffering from a simple lack of revenue management. Vachette can help to increase your revenue and secure your income through proper practice management and consultation. To discover how Vachette can help your practice, visit our Web site at www.vachettepathology.com.

Supporters

Mark A. Hurt, MD

ASDP Secretary-Treasurer
 Slide Library Microscopes
 Audience Response System

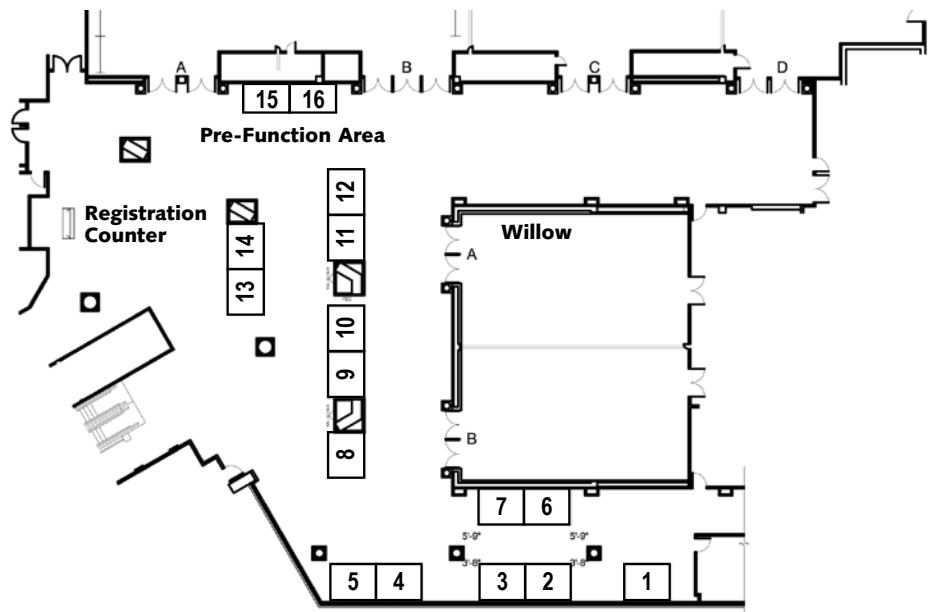
Lucid, Inc.

2320 Brighton Henrietta T/L Road
 Rochester, NY 14623
 Phone: +1-585-239-9800
 President's Reception

ProPath® Dermatopathology

8267 Elmbrook Drive, Suite 100
 Dallas, TX 75247
 Phone: +1-214-638-2000; +1-800-258-1253
 Hotel Key Card

**Sheraton Seattle
 Grand Ballroom A & B**



Exhibits & Support

Thursday, October 20

Unless noted otherwise, all session rooms are located on the 2nd floor.

7:00 a.m. – 7:30 p.m.	Registration and Information	Grand Ballroom Foyer
7:00 a.m. – 7:30 p.m.	Speaker Ready Room	Madrona
8:00 a.m. – Noon	Exhibit Set-up	Grand Ballroom Foyer
8:00 a.m. – 1:00 p.m.	Poster Session #1 Set-up	Grand Ballroom A/B
8:45 a.m. – Noon	Board Review Course	Diamond, 1st Floor
9:00 a.m. – 10:15 a.m.	Consultation in Dermatopathology 100 Cutaneous Vasculitis: Selected Cases with Emphasis on Clinicopathologic Correlation <i>Lawrence E. Gibson, MD</i>	Juniper
	Consultation in Dermatopathology 101 Hair Follicle Proliferations — My Cases and Yours <i>Mark A. Hurt, MD</i>	Douglas
	Consultation in Dermatopathology 102 Dermatitis vs. Parapsoriasis/Prelymphoma vs. Mycosis Fungoides/ Cutaneous T-Cell Lymphoma - Skin Rash vs. Systemic Cancer <i>W. Clark Lambert, MD, PhD</i>	Cedar
9:00 a.m. – Noon	Self-Assessment Session A <i>Course Director: Thomas N. Helm, MD</i> <i>State University of New York at Buffalo</i>	Willow
10:45 a.m. – Noon	Consultation in Dermatopathology 103 Diagnostic Approach to Problematic Neural Tumors <i>Zsolt B. Argenyi, MD</i>	Juniper
	Consultation in Dermatopathology 104 Look-alikes in Neoplastic Dermatopathology <i>David J. DiCaudo, MD</i>	Douglas
	Consultation in Dermatopathology 105 Understanding and Interpreting FISH Results Including the Pitfalls When Evaluating Melanocytic Neoplasms <i>Pedram Gerami, BS, MD</i>	Cedar
1:00 p.m. – 2:15 p.m.	Consultation in Dermatopathology 106 Cutaneous Reactions to Novel Therapeutics <i>Mai P. Hoang, MD</i>	Juniper
	Consultation in Dermatopathology 107 Instructive Cases in Cutaneous Lymphoma <i>Jacqueline M. Junkins-Hopkins, MD</i>	Douglas
	Consultation in Dermatopathology 108 Difficult Cutaneous Lymphoma Cases from the Stanford Case Files <i>Uma Sundram, MD, PhD</i>	Cedar
1:00 p.m. – 3:00 p.m.	Young Physicians' Forum: Life's a Bowl of Cherries If You Don't Choke on the Pits <i>Course Directors:</i> <i>Rajiv M. Patel, MD, University of Michigan</i> <i>Melissa P. Piliang, MD, Cleveland Clinic</i>	Grand Ballroom C/D
1:00 p.m. – 4:00 p.m.	Self-Assessment Session B <i>Course Director: Thomas N. Helm, MD</i> <i>State University of New York at Buffalo</i>	Willow
1:00 p.m. – 6:30 p.m.	Exhibit Viewing	Grand Ballroom Foyer
1:00 p.m. – 10:00 p.m.	Poster Session #1 Viewing	Grand Ballroom A/B
Opens at 1:00 p.m.	Evening Slide Symposium Preview – Open 24-hours!	Aspen
2:45 p.m. – 4:00 p.m.	Consultation in Dermatopathology 109	Juniper

The American Society of Dermatopathology

	Inflammatory Conditions that Can Mimic Atypical or Malignant Hematolymphoid Proliferations <i>David S. Cassarino, MD, PhD</i>	
	Consultation in Dermatopathology 110 Cutaneous Manifestations of Systemic Disease: Morphology, Molecules and More <i>Jinah Kim, MD, PhD</i>	Douglas
	Consultation in Dermatopathology 111 Role of Immunohistochemistry in Diagnosing Tumors of Cutaneous Appendages <i>Mai P. Hoang, MD</i>	Cedar
3:15 p.m. – 4:45 p.m.	Oral Abstract Session #1	Grand Ballroom C/D
3:30 p.m. – 6:00 p.m.	Board of Directors' Meeting	Issaquah, 3rd Floor Union Street Tower
5:00 p.m. – 6:30 p.m.	Duel in Dermatopathology	Grand Ballroom C/D
6:45 p.m. – 9:00 p.m.	Short Course I: Inflammatory and Neoplastic Dermatopathology with Focus on the Breast <i>Course Director:</i> Lawrence E. Gibson, MD <i>Mayo Clinic, Rochester</i>	Grand Ballroom C/D
9:00 p.m. – 10:00 p.m.	Young Physicians' Reception and ASDP Art Show	Cirrus, 35th Floor Pike Street Tower

Thursday, October 20

Young Physicians' Reception & ASDP Art Show

Thursday, October 20
9:00 p.m. – 10:00 p.m.

Dermatopathology fellows and dermatopathologists in the first seven years of practice are invited to join us to network with the Young Physicians' Forum panel members and other dermatopathology role models at the Young Physicians' Reception. Hors d'oeuvres and refreshments (wine/beer) will be served while guests peruse art displayed by ASDP members. Don't miss this unique opportunity to develop professional relationships with your leaders and peers.

Board Review Course

8:45 a.m. – Noon

Diamond Room, 1st Floor

Tickets are required to enter this course. Visit the ASDP registration desk for ticket availability.

Course Director: Thomas N. Helm, MD

State University of New York at Buffalo

2.75 hours CME credit

New this year! This course will provide up-to-date information needed to pass the dermatopathology certifying examination and assumes basic competency in the field. This course will also benefit practitioners who would like an up-to-date review to fill practice gaps.

This course is not designed to be a comprehensive review of the board exams.

Faculty and Course Outline:

8:45 a.m. **Structure and Function of the Skin**

Alina Bridges, DO
Mayo Clinic, Rochester

9:05 a.m. **Genodermatoses**

Darius R. Mehregan, MD
Pinkus Dermatopathology Lab PC

9:25 a.m. **Vasculitis, Panniculitis and Connective Tissue Diseases**

Margot S. Peters, MD
Mayo Clinic, Rochester

9:45 a.m. **Immunohistochemistry as an Aid in the Diagnosis of Adnexal Neoplasms**

Diya F. Mutasim, MD
University of Cincinnati

10:05 a.m. **Melanoma and Merkel Cell Carcinoma**

Klaus J. Busam, MD
Memorial Sloan-Kettering Cancer Center

10:25 a.m. **Spindle Cell Neoplasms**

Rajiv M. Patel, MD
University of Michigan

10:45 a.m. **Lymphoma and Lymphoproliferative Diseases**

Loren E. Clarke, MD
Penn State Milton S. Hershey Medical Center/College of Medicine

11:05 a.m. **Tropical and Extraordinary Diseases**

Tammie C. Ferringer, MD
Geisinger Medical Center

11:25 a.m. **Selected Molecular Genetic Studies in Dermatopathology**

Diya F. Mutasim, MD
University of Cincinnati

11:45 a.m. **Tips and Comments from a Recent Diplomate**

Garron Solomon, MD
CBLPath, Inc.

Upon completion of this course, participants should be able to:

- Identify board examination requirements.
- Utilize new technology to assist with various diagnoses and treatment methods.

Young Physicians' Forum

Life's a Bowl of Cherries If You Don't Choke on the Pits

1:00 p.m. – 3:00 p.m.

Grand Ballroom C/D

Course Directors:

Melissa P. Piliang, MD, *Cleveland Clinic*

Rajiv M. Patel, MD, *University of Michigan*

2 hours CME credit

Back by popular demand! Dermatopathology fellows and early career dermatopathologists are invited to join us again for this informative session. Career insights and advice will be available to all who attend the ASDP Young Physicians' Forum. A short series of lectures will be followed by an open format panel discussion in which leaders in our field respond to your questions about career development and management in a relaxed and friendly environment. Don't miss this unique opportunity to develop professional relationships with your leaders and peers.

Faculty and Session Outline:

1:00 – 1:15 p.m. **Keys to Building a Successful Practice and Maintaining your Sanity**

Lisa M. Cohen, MD

Tufts University School of Medicine

1:15 – 1:30 p.m. **Charting the Course to a Successful and Rewarding Career**

Antoinette F. Hood, MD

Eastern Virginia Medical School

1:30 – 1:45 p.m. **How to Avoid Being Rejected and Dejected — What Editors are Looking For in Manuscripts**

Timothy H. McCalmont, MD

University of California, San Francisco

1:45 – 3:00 p.m. **Panel Discussion**

Panelists:

Steven D. Billings, MD, *Cleveland Clinic*

Lisa M. Cohen, MD, *Tufts University School of Medicine*

Earl J. Glusac, MD, *Yale University School of Medicine*

Antoinette F. Hood, MD, *Eastern Virginia Medical School*

Timothy H. McCalmont, MD, *University of California, San Francisco*

Beth S. Ruben, MD, *University of California, San Francisco*

Upon completion of this session, participants should be able to:

- Avoid pitfalls that result in manuscript rejection.
- Identify and address practice gaps in first five years of practice.
- Recognize academic promotion requirements.

Oral Abstract Session #1

3:15 p.m. – 4:45 p.m.

Grand Ballroom C/D

Course Moderator: Eric W. Hossler, MD, Geisinger Medical Center

1.5 hours CME credit

Abstracts presented in Oral Abstract Session #1 can be found in the “Abstract & Handout” book. Abstracts are listed in the order of presentation.

Time	Title	Speaker
3:15 – 3:25 p.m.	8q34 Positive Melanoma, an Aggressive Subtype of Melanoma with Distinct Clinical and Histologic Features	<i>Pedram Gerami, MD</i>
3:25 – 3:35 p.m.	Angiotropism is a Predictor of Microscopic Satellites in Primary Cutaneous Melanoma	<i>Raymond L. Barnhill, MD</i>
3:35 – 3:45 p.m.	Evaluation of a Type VII Collagen ELISA for Detection of Autoantibodies in Epidermolysis Bullosa Acquisita and Bullous Lupus Erythematosus	<i>Earl E. Bain, III, MD</i>
3:45 – 3:55 p.m.	Differential p16(INK4A) Immunoreactivity Patterns: Bowen Disease Versus Bowenoid Papulosis	<i>Nicholas Whitling, MD</i>
3:55 – 4:05 p.m.	Syringotropic Melanoma: A Series of 7 Cases Demonstrates High Risk of Occult Deep Dermal Invasion	<i>Artur Zembowicz, MD, PhD</i>
4:05 – 4:15 p.m.	Hyperspectral Imaging of Melanocytic Lesions	<i>Sudeep Gaudi, MD</i>
4:15 – 4:25 p.m.	MUM-1 and p63 Do Not Discriminate Between Cutaneous Anaplastic CD30+ Lymphoma and Lymphomatoid Papulosis	<i>Maryam Afshar, MBBS</i>
4:25 – 4:35 p.m.	The Presence and Localization of Onychodermis (Specialized Nail Mesenchyme) Containing Onychofibroblasts in the Nail Unit: A Morphologic and Immunohistochemical study	<i>Dong-Youn Lee, MD, PhD</i>
4:35 – 4:45 p.m.	Trichilemmomas with Divergent Differentiation: A Review of 39 Cases	<i>Blanca Martin, MD</i>

Upon completion of this session, participants should be able to:

- Identify various clinical and basic science topics within dermatopathology.
- Exemplify and promote exchange of new ideas and concepts within the field of dermatopathology.
- Describe innovative investigative studies and tools pertaining to bench and translational research.
- Compare unique pathological perspectives and concepts as they relate to individual and groups of cases.

12th Annual Duel in Dermatopathology Resident Abstract Competition

5:00 – 6:30 p.m.

Grand Ballroom C/D

Course Moderator: Christine Jaworsky, MD, Professor of Dermatology, Case Western Reserve University

1.5 hours CME credit

Abstracts presented in the Duel in Dermatopathology oral abstract competition can be found in the “Abstract & Hand-out” book. Abstracts are listed in the order of presentation.

The American Society of Dermatopathology is proud to present the 12th Annual Duel in Dermatopathology abstract competition for dermatology and pathology residents. This resident forum consists of succinct five-minute presentations. Prizes for first, second and third place will be awarded for the best clinical-pathologic case reports. Presentations will be evaluated on content, form and instructive value to dermatopathology. Abstracts selected to compete in the “Duel in Dermatopathology” will be published in a featured section of the *Journal of Cutaneous Pathology*. (Competing residents have already been chosen.)

Award winners will be announced at 1:45 p.m., Saturday, Oct. 22, immediately prior to the Elson B. Helwig Memorial Lecture.

Time	Title	Speaker
5:00 – 5:05 p.m.	Intravascular Endothelial Proliferations Masquerading as Multiple Intravascular Pyogenic Granulomas in a Patient with VEGF Dysfunction	<i>Erick Jacobson-Dunlop, MD</i>
5:05 – 5:10 p.m.	Cutaneous Phosphaturic Mesenchymal Tumor of the Mixed Connective Tissue Type: Report of an Unusual Case with Karyotyping and Ultrastructural Study	<i>Wonwoo Shon, DO</i>
5:10 – 5:15 p.m.	Sweet's Syndrome in the Setting of AML Containing a Morphologic Mimicker of Cryptococcus	<i>Jennifer Ko, MD, PhD</i>
5:15 – 5:20 p.m.	Diagnosis of Graft-Versus-Host Disease Following Liver Transplantation Without Peripheral Blood Macrochimerism	<i>Joshua Schulman, MD</i>
5:20 – 5:25 p.m.	Acral Cutaneous Metastasis from Breast Carcinoma After Treatment with Bevacizumab: Incidental or Causative Association?	<i>Alde Carlo Gavino, MD</i>
5:25 – 5:30 p.m.	Chondroid Syringoma (Cutaneous Mixed Tumor) with Tyrosine Crystals	<i>Amanda Hernandez, MD</i>
5:30 – 5:35 p.m.	Lymphomatoid Papulosis Type D: Report of a Case	<i>L. David Hall, MD</i>
5:35 – 5:40 p.m.	Neutrophil-rich Urticaria: A Case of Familial Cold Autoinflammatory Syndrome in an Ashkenazi Jewish Family	<i>Melanie Fox, DO</i>
5:40 – 5:45 p.m.	Congenital Extrarenal Rhabdoid Tumor in an Infant with Chromosome 22q Deletion: the Importance of SMARCB1	<i>Andrea Chakrapani, MD</i>
5:45 – 5:50 p.m.	Dendritic Cell Neurofibroma with Pseudorosettes: A Distinct Histological Variant	<i>Jeffrey Hick, MD</i>
5:50 – 5:55 p.m.	From Furuncle to Axillary Web Syndrome: Shedding Light on Histopathology and Pathogenesis	<i>Shadi Rashtak, MD</i>
5:55 – 6:00 p.m.	Myxoid Onychomatricoma	<i>Campbell Stewart, MD</i>
6:00 – 6:05 p.m.	Epidermotropic Metastatic Melanoma Masquerading as Multiple Primary Melanomas: True Pathogenesis Exposed by Comparative Genomic Hybridization	<i>James Macdonald, MD</i>
6:05 – 6:10 p.m.	Not Your Typical Skin Nodule: Clear Cell Adenocarcinoma Arising in Scar Endometriosis	<i>Andrea Haws, MD, MS</i>
6:10 – 6:15 p.m.	IgA Pemphigus vs Pyodermitis-Pyostomatitis Vegetans	<i>Jayson Miedema, MD</i>

Time	Title	Speaker
6:15 – 6:20 p.m.	Systemic Sarcoidosis Presenting as Cutaneous Granulomatous Vasculitis	<i>Natasha Atanaskova Mesinkovska, MD, PhD</i>
6:20 – 6:25 p.m.	Mitotically Active Proliferative Nodule Arising in a Giant Congenital Melanocytic Nevus: a Diagnostic Pitfall	<i>Thuy Linh Nguyen, MD</i>
6:25 – 6:30 p.m.	Pyogenic Variant of a Primary Cutaneous Intravascular CD30+ Lymphoproliferative Disorder	<i>M. Drake Poeschl, MD</i>

Upon completion of this session, participants should be able to:

- Expand diagnostic skills by recognizing clinicopathologic entities presented via abstracts.
- Utilize and interpret diagnostic clues and techniques identified by literature review of these cases.

Congratulations to the 2011 American Society of Dermatopathology Research Grant Recipient



*Janis Marie Taube, MD,
Johns Hopkins Medical Institutions*

B7-HI/PD-I Axis as a Therapeutic Target in Melanoma: Transcriptional Profiling of B7-HI Expression

The ASDP Dermatopathology Research Grant is administered by the Dermatology Foundation.
www.dermatologyfoundation.org

Short Course I: Inflammatory and Neoplastic Dermatopathology with Focus on the Breast

6:45 p.m. – 9:00 p.m.

Grand Ballroom C/D

Course Director: Lawrence E. Gibson, MD, Mayo Clinic, Rochester

2.25 hours CME Credit

This course will focus on predominantly inflammatory diseases as they may occur in the breast. Selected neoplastic disorders, excluding adenocarcinoma, will also be discussed. Attendees will gain a greater appreciation for these specific diseases as they occur in this special site. The knowledge and diagnosis accuracy of these disorders will increase after attending this course. Topics will include inflammatory lesions of the breast, atypical vascular tumors, EGFR related drug eruptions and anaplastic large cell lymphoma.

Faculty and Course Outline:

6:45 p.m.	Introduction Lawrence E. Gibson, MD <i>Mayo Clinic, Rochester</i>
6:50 p.m.	Inflammatory Lesions of the Breast Margot S. Peters, MD <i>Mayo Clinic, Rochester</i>
7:25 p.m.	Atypical Vascular Tumor Steven D. Billings, MD <i>Cleveland Clinic</i>
7:55 p.m.	EGFR-related Drug Eruptions Klaus J. Busam, MD <i>Memorial Sloan-Kettering Cancer Center</i>
8:25 p.m.	Anaplastic Large Cell Lymphoma Andrew L. Feldman, MD <i>Mayo Clinic, Rochester</i>
8:55 p.m.	Closing Remarks Lawrence E. Gibson, MD <i>Mayo Clinic, Rochester</i>

Upon completion of this course, participants should be able to:

- Obtain a greater understanding and appreciation of inflammatory diseases of the breast.
- Develop increased knowledge of these disorders.
- Improve accuracy of future diagnosis.

Friday, October 21

Unless noted otherwise, all session rooms are located on the 2nd floor.

Open 24-hours	Evening Slide Symposium Preview	Aspen
6:30 a.m. – 8:00 a.m.	Continental Breakfast	Grand Ballroom Foyer
6:30 a.m. – 4:30 p.m.	Poster Session #1 Viewing	Grand Ballroom A/B
6:30 a.m. – 5:00 p.m.	Registration and Information	Grand Ballroom Foyer
6:30 a.m. – 5:00 p.m.	Speaker Ready Room	Madrona
7:00 a.m. – 8:15 a.m.	Consultation in Dermatopathology 200 Interesting Fibrohistiocytic Proliferations <i>Hideko Kamino, MD</i>	Juniper
	Consultation in Dermatopathology 201 Dermatopathology of Rheumatologic Diseases <i>Gary Goldenberg, MD</i>	Douglas
	Consultation in Dermatopathology 202 Who is Who in the WHO/EORTC Classification of Cutaneous B-cell Lymphoma? <i>Jochen T. Schaefer, MD</i>	Cedar
7:00 a.m. – 10:00 a.m.	Self-Assessment Session C <i>Course Director: Thomas N. Helm, MD</i> <i>State University of New York at Buffalo</i>	Willow
8:00 a.m. – Noon	Short Course II: Melanocytic Lesions and Sacred Cows: What is True and What is Dogma? <i>Course Director: Raymond L. Barnhill, MD</i> <i>David Geffen School of Medicine at UCLA</i>	Grand Ballroom C/D
8:45 a.m. – 10:00 a.m.	Consultation in Dermatopathology 203 A Practical Pattern-based Approach to Cutaneous Soft Tissue Tumors <i>Rajiv M. Patel, MD</i>	Juniper
	Consultation in Dermatopathology 204 Melanoma or Not? Bring Your Own Slides <i>Geoffrey J. Gottlieb, MD</i>	Douglas
	Consultation in Dermatopathology 205 Lessons From Louisville <i>Soon Bahrami, MD</i>	Cedar
9:00 a.m. – 5:00 p.m.	Exhibit Viewing	Grand Ballroom Foyer
9:45 a.m. – 10:15 a.m.	Refreshment Break	Grand Ballroom Foyer
10:30 a.m. – 11:45 a.m.	Consultation in Dermatopathology 206 Nail Pathology <i>Beth S. Ruben, MD</i>	Juniper
	Consultation in Dermatopathology 207 Vasculitis and Lymphatic Diseases <i>J. Andrew Carlson, MD</i>	Douglas
	Consultation in Dermatopathology 208 Infections and Infestations <i>Dirk M. Elston, MD</i>	Cedar
10:30 a.m. – 1:30 p.m.	Self-Assessment Session D <i>Course Director: Thomas N. Helm, MD</i> <i>State University of New York at Buffalo</i>	Willow
Noon – 1:00 p.m.	Box Lunch	Grand Ballroom Foyer
Noon – 1:30 p.m.	Dermatopathology Fellowship Training Directors' Meeting	Cirrus, 35th Floor Pike Street Tower

The American Society of Dermatopathology

12:30 p.m. – 2:00 p.m.	Oral Abstract Session #2	Grand Ballroom C/D
1:00 p.m. – 2:15 p.m.	Consultation in Dermatopathology 209 Diagnostic Challenges in Cutaneous Soft Tissue Tumors <i>Steven D. Billings, MD</i>	Juniper
	Consultation in Dermatopathology 210 A Fundamental/Algorithmic Approach to Atypical Lymphoid Infiltrates: Benign vs. Malignant <i>Lynn D. Cooper, MD</i>	Douglas
	Consultation in Dermatopathology 211 Atypical and Malignant Adnexal Neoplasms <i>David S. Cassarino, MD</i>	Cedar
Opens at 2:00 p.m.	Slide Library – Open 24-hours!	Willow
2:45 p.m. – 4:00 p.m.	Consultation in Dermatopathology 212 Defining Panniculitis: Chicken Soup or Cheerios? <i>Tammie C. Ferringer, MD</i>	Juniper
	Consultation in Dermatopathology 213 Nail Pathology <i>Beth S. Ruben, MD</i>	Douglas
	Consultation in Dermatopathology 214 Hot Cases from the South <i>Nooshin K. Brinster, MD</i>	Cedar
3:00 p.m. – 6:00 p.m.	Herman Pinkus Memorial Basic Science Course <i>Course Director: Klaus J. Busam, MD, Memorial Sloan-Kettering Cancer Center</i>	Grand Ballroom C
3:00 p.m. – 7:00 p.m.	Self-Assessment Discussion <i>Course Director: Thomas N. Helm, MD, State University of New York at Buffalo</i>	Grand Ballroom D
4:30 p.m. – 5:00 p.m.	Refreshment Break	Grand Ballroom Foyer
4:30 p.m. – 5:00 p.m.	Poster Session #1 Defense	Grand Ballroom A/B
4:30 p.m. – 5:45 p.m.	Mini Course: Teledermatopathology – An Introduction to the Future	Diamond A/B, 1st Floor
4:30 p.m. – 5:45 p.m.	Consultation in Dermatopathology 215 Cutaneous B-Cell Lymphoma <i>Antonio Subtil, MD, MBA</i>	Juniper
	Consultation in Dermatopathology 216 Current Issues in Vulvar Pathology <i>M. Angelica Selim, MD</i>	Douglas
	Consultation in Dermatopathology 217 Tough Melanocytic Lesions <i>Dirk M. Elston, MD</i>	Cedar
5:00 p.m. – 7:00 p.m.	Poster Session #1 Dismantle	Grand Ballroom A/B
7:00 p.m. – 10:00 p.m.	Poster Session #2 Set-up	Grand Ballroom A/B
6:45 p.m. – 11:00 p.m.	President's Reception and Banquet Coaches will promptly depart at the Union Street side of the hotel at 6:45 p.m.	Columbia Tower Club

Short Course II: Melanocytic Lesions and Sacred Cows: What is True and What is Dogma?

8:00 a.m. – Noon

Grand Ballroom C/D

Course Director: Raymond L. Barnhill, MD, David Geffen School of Medicine at UCLA

3.5 hours CME Credit

Dermatopathologists face recurring key issues and problems concerning the biology of melanocytic lesions. This course rigorously examines some of the sacred cows and dogmas that have long characterized melanocytic lesions and have often been perpetuated *ad infinitum* in this field. The goals of the course are to dispel and expunge fuzzy thinking and untruth as much as possible with critical analysis and objective information.

Faculty and Course Outline:

8:00 – 8:30 a.m. **An Ambiguous Melanocytic Neoplasm + A Positive Sentinel Node: Is It Melanoma?**

Philip E. LeBoit, MD

University of California, San Francisco

8:30 – 9:00 a.m. **The Application of Molecular Techniques to Melanocytic Lesions:
A Critical Re-examination and New Insights**

Heinz H. Kutzner, MD

Dermatopathologie Friedrichshafen

9:00 – 9:30 a.m. **Mechanisms of Melanoma Metastasis: A Historical Critique and New Observations**

Raymond L. Barnhill, MD

David Geffen School of Medicine at UCLA

9:45 – 10:15 a.m. Refreshment Break

10:00 – 10:30 a.m. **Margins for Melanocytic Lesions: Is There Any Method in the Madness?**

Scott Binder, MD

UCLA Medical Center, Geffen School of Medicine

10:30 – 11:00 a.m. **Histopathological Interpretation of Melanocytic Lesions: Discordance and the Way Forward**

Michael W. Piepkorn, MD

University of Washington

11:00 – 11:30 a.m. **Lentigo Maligna: What Is It and How Is It Managed?**

L. Frank Glass, MD

University of South Florida, College of Medicine

11:30 – 12:00 p.m. **The Classification of Melanoma: How Many Melanomas Exist?**

Boris C. Bastian, MD

Memorial Sloan-Kettering Cancer Center

Upon completion of this course, participants should be able to:

- Describe fundamental issues and problems in the biology of melanocytic lesions.
- Improve critical judgment and clinical practice in this area of dermatopathology.
- Examine the most up-to-date and reliable information on key issues in the biology of melanocytic lesions based on the most objective data available in literature and experts' experience.

Oral Abstract Session #2

12:30 p.m. – 2:00 p.m.

Grand Ballroom C/D, 2nd Floor

Course Moderator: Loren E. Clarke, MD, Penn State Hershey Medical Center

1.5 hour CME credit

Abstracts presented in Oral Abstract Session #2 can be found in the “Abstract & Handout” book. Abstracts are listed in the order of presentation.

Time	Title	Speaker
12:30 – 12:40 p.m.	Neurofilament is Superior to CK20 for the Identification of Merkel Cell Carcinoma: A Review of 351 Cases	Alexander Wong, MD
12:40 – 12:50 p.m.	PTen Loss in Trichilemmoma: Sporadic and Cowden Syndrome Associated	Tariq Al-Zaid, MD
12:50 – 1:00 p.m.	Cutaneous Spindle Cell ('Sarcomatoid') B-cell Lymphoma with Cytogenetic Analysis Revealing Novel Chromosomal Abnormalities	Holly Paugh, MD
1:00 – 1:10 p.m.	Proteomic Characterization of Melanocytic Tumors Using Mass Spectrometry	Juan Vasquez, MD
1:10 – 1:20 p.m.	Degree of Histologic Inflammation in Lupus Erythematosus and Direct Immunofluorescence Results: Red and Angry Lesions Do Not Increase the Chances of Getting a Bright Band	Tawny Hung, MD
1:20 – 1:30 p.m.	Life-threatening Leukocytoclastic Vasculitis (LCV) Precipitated by Rituxan Therapy in a Patient with Hepatitis C and Lymphoplasmacytic Lymphoma (LPL): A Type I-II Cryoglobulinemia?	Gretchen Frieling, MD
1:30 – 1:40 p.m.	The Frequency of Primary Cilia on Primary Mucosal Melanomas	Salma Dabiri, MD
1:40 – 1:50 p.m.	Three Cases of an Exceptional Diagnosis: Indolent CD8-positive Lymphoid Proliferation of the Ear Type	Danielle Greenblatt, MBChB, MRCP
1:50 – 2:00 p.m.	CD8-positive CD30-positive Lymphomatoid Papulosis and Its Differential Diagnosis: A Review of 20 Cases	Elizabeth McQuitty, MD

Upon completion of this session, participants should be able to:

- Identify various clinical and basic science topics within dermatopathology.
- Exemplify and promote exchange of new ideas and concepts within the field of dermatopathology.
- Describe innovative investigative studies and tools pertaining to bench and translational research.
- Compare unique pathological perspectives and concepts as they relate to individual and groups of cases.

Herman Pinkus Memorial Basic Science Course

3:00 p.m. – 6:00 p.m.

Grand Ballroom C

Course Director: Klaus J. Busam, MD, Memorial Sloan-Kettering Cancer Center

2.5 hours CME Credit

This year's Basic Science Course focuses on molecular dermatopathology. The course aims to inform practicing dermatopathologists about recent advances in science that have translated into molecular tests for the diagnosis and/or prognosis of cutaneous neoplasms, with emphasis on melanocytic, hematopoietic and soft tissue tumors. Technical aspects of the tests as well as conceptual issues will be addressed. Emphasis will be placed on indications, clinical utility, limitations and pitfalls of various tests, and how to use test results for best clinical care.

Faculty and Course Outline:

3:00 p.m. **Mutations in Melanoma — Biologic and Clinical Relevance**

Boris C. Bastian, MD

University of California, San Francisco

3:45 p.m. **FISH and CGH Analysis for Melanoma Diagnosis**

Pedram Gerami, BS, MD

Northwestern University Medical Center

4:30 – 5:00 p.m. Refreshment Break

5:00 p.m. **Molecular Tests for Cutaneous Lymphomas or Leukemias**

Daniel M. Jones, MD

Quest Diagnostics Nichols Institute

5:45 p.m. **Clinically Relevant Molecular Testing of Soft Tissue Tumors in the Skin and a Bit Below**

Alexander J.F. Lazar, MD, PhD

University of Texas MD Anderson Cancer Center

Upon completion of this course, participants should be able to:

- Identify the recent scientific advances that permitted development of new molecular tests.
 - Utilize and interpret molecular tests for diagnosis and prognosis of cutaneous neoplasms, with emphasis on melanocytic, hematopoietic and soft tissue tumors.
 - Apply technical aspects and conceptual issues of these tests to practice.
-

Previous Herman Pinkus Memorial Basic Science Course Directors

**In 2010 the format of the Herman Pinkus Memorial Lecture was changed to encompass a wider range of scientific topics that relate to the field of dermatopathology.*

2010 Lawrence E. Gibson, MD

Previous Herman Pinkus Memorial Lecturers

2009 Lisa A. Beck, MD

2008 Norma J. Nowak, PhD

2007 David Fisher, MD, PhD

2006 Sharon Weiss, MD

2005 Boris C. Bastian, MD

2004 Michael W. Piepkorn, MD

2003 A. Razzaque Ahmed, MD

2002 Philip E. LeBoit, MD

2001 Robert C. Gallo, MD

2000 Elaine Fuchs, PhD

1999 Thomas A. Waldmann, MD

1998 David T. Woodley, MD

1997 Karen A. Holbrook, PhD

1996 Judah Folkman, MD

1995 Margaret Kripke, MD

1993 Douglas R. Lowy, MD

1992 Walter R. Gammon, MD

1991 Stephen I. Katz, MD, PhD

1990 Lance A. Liotta, MD, PhD

1989 John R. Stanley, MD

1988 Jouni J. Uitto, MD, PhD

1987 Clive Taylor, MD, PhD

1986 Tung-Tien Sun, PhD

MOC-DP Self-Assessment in Dermatopathology Discussion

3:00 p.m. – 7:00 p.m.

Grand Ballroom D

Course Director: Thomas N. Helm, MD, State University of New York at Buffalo

3.5 hours CME credit

You must have been registered for one of the Thursday or Friday courses (A, B, C or D) to attend this discussion. Tickets are required to enter the course.

Participants will have the opportunity to study 75 challenging slides representing a wide range of inflammatory and neoplastic diseases, during one of four identical sessions. During the discussion, session faculty members will review the diagnostic features of each case, as well as differential diagnosis.

The ASDP Self-Assessment in Dermatopathology course offers Maintenance of Certification in Dermatopathology (MOC-DP) credit to satisfy the American Board of Dermatology (ABD) and the American Board of Pathology (ABP) MOC requirements.

ABD SA – The ASDP is a provider of Self-Assessments (SAs) for the Maintenance of Certification program of the American Board of Dermatology (ABD). The ASDP Self-Assessment in Dermatopathology course offers up to 100 MOC SA question credits. Participants must take and pass the exam in order to claim SA points.

ABP SAMs – The ASDP is a provider of Self-Assessment Modules (SAMs) for Part II of the Maintenance of Certification program of the American Board of Pathology (ABP). The ASDP Self-Assessment in Dermatopathology course offers six and a half (6.5) SAMs. Participants must take and pass the exam in order to claim SAMs. Participants may only claim either SAMs or CME for this activity.

Faculty:

Wilma F. Bergfeld, MD, FACP, FAAD, *Cleveland Clinic*

Steven D. Billings, MD, *Cleveland Clinic*

Loren E. Clarke, MD, *Penn State Milton S. Hershey Medical Center/College of Medicine*

Deborah L. Cook, MD, *Fletcher Allen Health Care, University of Vermont College of Medicine*

April C. Deng, MD, *University of Massachusetts Medical School*

Ramsay S. Farah, MD, *The Hill Medical Center*

Ying Guo, MD, *Ackerman Academy of Dermatopathology*

Thomas N. Helm, MD, *State University of New York at Buffalo*

Michael D. Ioffreda, MD, *The Pennsylvania State University*

Heinz H. Kutzner, MD, *Dermatopathologie Friedrichshafen*

Lin Lin, MD, PhD, *Buffalo Medical Group*

Meera Mahalingam, MD, PhD, FRCPath, *Boston University School of Medicine*

Diya F. Mutasim, MD, *University of Cincinnati*

Rajiv M. Patel, MD, *University of Michigan*

Melissa P. Piliang, MD, *Cleveland Clinic*

Ronald P. Rapini, MD, *University of Texas Houston Medical School*

Sarah N. Walsh, MD, *Cutaneous Pathology WCP Laboratories, Inc.*

Upon completion of this course, participants should be able to:

- Recognize the key light microscopic features of common, rare and unusual entities without immunoperoxidase staining.
- Expand diagnostic skills by increasing familiarity with a variety of skin conditions.
- Differentiate between diseases with similar or overlapping histologic findings during microscopic sign out sessions.
- Incorporate new information gained from the presented cases into their scopes of dermatopathology practice.

Mini Course: Teledermatopathology — An Introduction to the Future

4:30 p.m. – 5:45 p.m.

Diamond A/B

Tickets are required to enter this course.

Visit the ASDP registration desk for ticket availability.



Course Directors:

Laszlo J. Karai, MD, PhD

University of Texas Southwestern

Laszlo Igali, MD

Royal College of Pathologists, Norfolk, UK

1.25 hours CME Credit

The course will focus on state of the art methods used to collect and transmit imaging data for diagnosis and teleconsultations in dermatopathology. A new iPhone/iPad application for differential diagnosis in dermatopathology will also be presented. The audience will be part of a live multiheaded virtual microscopic session with expert participants physically situated thousands of miles away.

Faculty:

Laszlo Igali, MD, *Royal College of Pathologists*

Rajendra Singh, MD, *University of Pittsburgh*

Upon completion of this course, participants should be able to:

- Gain historical perspectives of teledermatopathology.
- Understand the principles and practice of slide scanning.
- Use a new mobile application for differential diagnosis in dermatopathology.
- Establish and set up a secure videoconferencing connection.
- Choose an appropriate teleconferencing system.
- Use teledermatopathology for External Quality Assurance (EQA).

**3DHISTECH Ltd is graciously providing in-kind support for this course.*

President's Reception & Banquet



Zsolt B. Argyi, MD, President

7:00 p.m. – 11:00 p.m.
Columbia Tower Club

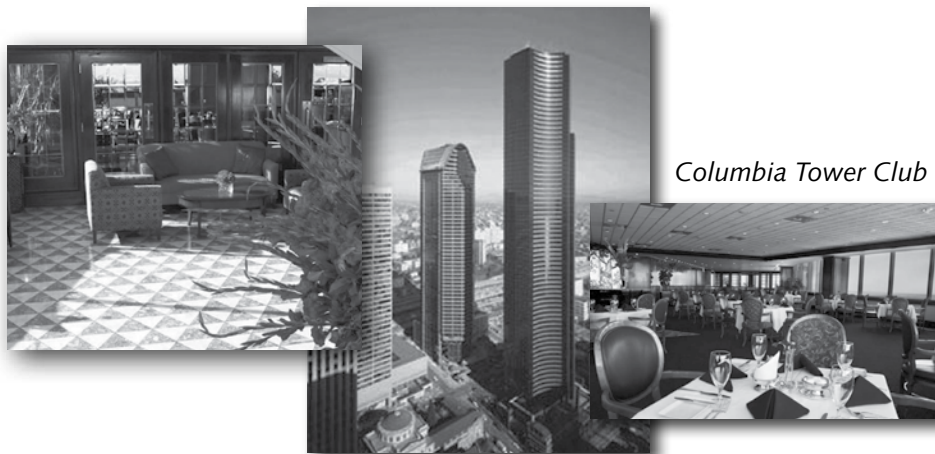
6:00 p.m. – 6:45 p.m.
Board coaches at the Union Street side of the hotel

With the most breathtaking views of the dynamic cityscape of Seattle, the Columbia Tower Club embraces and reflects the diversity and spirit of the city. The Club has been providing Members and their guests exceptional service and the most exquisite dining experience since 1985. The sophisticated feel of the Club, with a modern edge, includes floor-to-ceiling picture windows in every room, graceful and warm woodwork, and high-end finishes. The crowning jewel, though, is the panoramic view of one of the most exciting and dazzling cities in the world, with views of Puget Sound by day and millions of lights by night, sparkling like diamonds in the city 76 floors below the Columbia Tower Club.

Come together with friends and colleagues!

Purchase a reserved table for ten at the annual President's Reception and Banquet and reunite with colleagues or former fellows. Inquire at the registration desk for ticket availability.

Friday, October 21



Columbia Tower Club

Saturday, October 22

Unless noted otherwise, all session rooms are located on the 2nd floor.

Open 24-hours	Slide Library	Willow
Open 24-hours	Evening Slide Symposium Preview	Aspen
6:00 a.m. – 7:00 a.m.	Poster Session #2 Set-up	Grand Ballroom A/B
6:30 a.m. – 8:00 a.m.	Continental Breakfast	Grand Ballroom Foyer
6:30 a.m. – 5:00 p.m.	Registration and Information	Grand Ballroom Foyer
6:30 a.m. – 5:00 p.m.	Speaker Ready Room	Madrona
7:00 a.m. – 8:15 a.m.	Consultation in Dermatopathology 300 Pediatric Dermatopathology <i>Loren E. Golitz, MD</i>	Juniper
	Consultation in Dermatopathology 301 The Titanic: Survival in the Age of the Superficial Biopsy <i>Mark Jacobson, MD</i>	Douglas
	Consultation in Dermatopathology 302 Nevi and Malignant Melanoma from Specific Anatomic Sites <i>Terry L. Barrett, MD</i>	Cedar
7:00 a.m. – 10:00 p.m.	Poster Session #2 Viewing	Grand Ballroom A/B
8:00 a.m. – Noon	Short Course III: Mistakes that Matter <i>Course Director: Noreen M. G. Walsh, MD</i> <i>Dalhousie University, Halifax</i>	Grand Ballroom C/D
8:45 a.m. – 10:00 a.m.	Consultation in Dermatopathology 303 Emerged and Emerging Entities in Dermatopathology: A Comparison of Histopathologically Similar New and Old Entities <i>Meera Mahalingam, MD, PhD, FRCPath</i>	Juniper
	Consultation in Dermatopathology 304 Malignant Melanoma: Yes or No? <i>George P. Lupton, MD</i>	Douglas
	Consultation in Dermatopathology 305 HIV/AIDS-related Dermatopathology Revisited <i>Wayne Grayson, MD</i>	Cedar
9:00 a.m. – 4:00 p.m.	Exhibit Viewing	Grand Ballroom Foyer
10:00 a.m. – 10:30 a.m.	Refreshment Break	Grand Ballroom Foyer
10:30 a.m. – 11:45 a.m.	Consultation in Dermatopathology 306 Advanced Alopecia <i>Leonard C. Sperling, MD</i>	Juniper
	Consultation in Dermatopathology 307 Rocky Cases from the Rhode Island Coast <i>Leslie Robinson-Bostom, MD</i>	Douglas
	Consultation in Dermatopathology 308 Cutaneous Spindle Cell Lesions by Light and IPX <i>Timothy H. McCalmont, MD</i>	Cedar
12:15 p.m. – 1:15 p.m.	Annual Membership Business Meeting and Luncheon	Washington State Convention Center Room 6C, 6th Level
1:30 p.m. – 2:45 p.m.	Consultation in Dermatopathology 309 Diagnostic Challenges in Cutaneous Soft Tissue Tumors <i>Steven D. Billings, MD</i>	Juniper
	Consultation in Dermatopathology 310 Vascular Lesions <i>Omar P. Sanguenza, MD</i>	Douglas

Consultation in Dermatopathology 311		Cedar
Lessons from the Dermatology Clinic: Diagnostic Approach for Unique Inflammatory Cases and their Reportage <i>Kapil Gupta, MD</i>		
1:35 p.m. – 1:45 p.m.	Duel in Dermatopathology Awards Presentation	Grand Ballroom C/D
1:45 p.m. – 2:45 p.m.	Elson B. Helwig Memorial Lecture Heinz H. Kutzner, MD, <i>Dermatopathologie Friedrichshafen</i>	Grand Ballroom C/D
2:45 p.m. – 3:15 p.m.	President's Address: Zsolt B. Argenyi, MD	Grand Ballroom C/D
3:15 p.m. – 3:45 p.m.	Poster Session #2 Defense	Grand Ballroom A/B
3:15 p.m. – 3:45 p.m.	Refreshment Break	Grand Ballroom Foyer
3:30 p.m. – 4:45 p.m.	Consultation in Dermatopathology 312 Staging Tools and Molecular Studies and their Application for Evaluation and Therapy of Melanocytic Neoplasms <i>Kathleen J. Smith, MD</i>	Juniper
	Consultation in Dermatopathology 313 New and Emerging Infectious Diseases <i>Francisco G. Bravo, MD</i>	Douglas
	Consultation in Dermatopathology 314 Interesting Cases from New York <i>Klaus J. Busam, MD</i>	Cedar
4:00 p.m. – 6:00 p.m.	Fellows' Case Presentations	Grand Ballroom C/D
4:00 p.m.	Exhibits Dismantle	Grand Ballroom Foyer
4:30 p.m. – 6:00 p.m.	Program Committee Meeting	Diamond A/B
5:15 p.m. – 6:30 p.m.	Consultation in Dermatopathology 315 Mimickers in Dermatopathology <i>Jag Bhawan, MD</i>	Juniper
	Consultation in Dermatopathology 316 The Difficult Melanocytic Lesion <i>Raymond L. Barnhill, MD</i>	Douglas
	Consultation in Dermatopathology 317 Challenging Clinicopathologic Correlations <i>Clay J. Cockerell, MD</i>	Cedar
6:15 p.m. – 9:30 p.m.	Evening Slide Symposium <i>Course Director:</i> Klaus J. Busam, MD <i>Memorial Sloan-Kettering Cancer Center</i>	Grand Ballroom C/D

Short Course III: Mistakes that Matter

8:00 a.m. – Noon

Grand Ballroom C/D

Course Director: Noreen M.G. Walsh, MD, Dalhousie University, Halifax

3.5 hours CME credit

This course will encompass discussion of both neoplastic and inflammatory skin disease with an emphasis on the latter. Six expert dermatopathologists will focus on a spectrum of clinical and/or histopathological circumstances in which mistaken interpretation of microscopic findings is liable to occur and carry adverse implications for patients.

The speakers will take various approaches to the global topic by:

- Highlighting diagnostic pitfalls in relation to particular histopathological patterns of inflammatory skin disease.
- Providing guidance in the correct identification of infectious agents pertinent to dermatopathology.
- Outlining clues to the cutaneous manifestations of systemic disease.
- Sharing examples of various diagnostic errors that came to light over time from which important lessons were learned.

The aim is to alert the audience to potentially problematic areas in their field and to assist them in avoiding diagnostic traps.

Faculty and Session Outline:

8:00 – 8:15 a.m.	Introduction Noreen M.G. Walsh, MD <i>Dalhousie University, Halifax</i>
8:15 – 8:45 a.m.	Interface Dermatitis Wolfgang Weyers, MD <i>Center for Dermatopathology, Faeiburg, Germany</i>
8:45 – 9:15 a.m.	Dermatoses in Systemic Disease Vijaya B. Reddy, MD <i>Rush University Medical Center</i>
9:15 – 10:00 a.m.	Infectious Dermatopathology: The Mistakable and the Unmistakable Timothy H. McCalmont, MD <i>University of California, San Francisco</i>
10:00 – 10:30 a.m.	Refreshment Break
10:30 – 11:00 a.m.	Interstitial Dermatitis Petra Milde, MD <i>Atlanta Dermatopathology & Pathology Associates</i>
11:00 – 11:30 a.m.	Mimicry Heinz H. Kutzner, MD <i>Dermatopathologie Friedrichshafen</i>
11:30 a.m. – Noon	If at First You Don't Succeed... Noreen M.G. Walsh, MD <i>Dalhousie University, Halifax</i>

Upon completion of this course, participants should be able to:

- Identify and avoid diagnostic pitfalls that exist in different clinical and histopathological settings in the practice of dermatopathology.
- Develop strategies to avert error in those situations.

2011 Elson B. Helwig Memorial Lecture

1:45 p.m. – 2:45 p.m.

Grand Ballroom C/D

1 hour CME credit

This clinically oriented lecture began in October 1998 as the “Special Guest Lecture.” On July 31, 2000, the “Special Guest Lecture” was officially named the Elston B. Helwig Memorial Lecture in tribute of Dr. Helwig. The lectureship is awarded in recognition of excellence in the realm of diagnostic dermatopathology and for significant contribution to the dermatopathology literature and the education of fellows and colleagues.



Heinz H. Kutzner, MD

President, The International Society of Dermatopathology

Co-director, Dermatopathologie Friedrichshafen

From the Bench to the Microscope: Does Sophistication Matter?

Conventional H&E stains have been and will be the backbone of dermatopathology while recent advancements in immunohistochemistry and the advent of molecular pathology have established new standards for histopathological diagnosis in many fields. Infectious disorders, soft tissue tumors, and melanocytic lesions by now require advanced diagnostic protocols, e.g., genogenic immunohistochemistry, multicolor FISH, gene sequencing, MLPA. However, the practicing dermatopathologist, on his quest for new diagnostic gold standards, may overestimate

the importance of highly advertised new diagnostic methods. On the other hand, reliable and straightforward diagnostic techniques are often forgotten. Where are the exciting new fields in routine diagnostic methodology, and where should we not stray from the H&E world?

Previous Lecturers

2010 Helmut Kerl, MD

2009 Amy S. Paller, MD

2008 Paul A. Khavari, MD, PhD

2007 Steven Rosenberg, MD, PhD

2006 Jouni Uitto, MD, PhD

2005 Prof. Lorenzo Cerroni, MD

2004 Christopher D.M. Fletcher, MD, FRCPath

2003 Phillip H. McKee, MD

2002 Jean L. Bolognia, MD

President's Address

2:45 p.m. – 3:15 p.m.

Grand Ballroom C/D



Zsolt B. Argenyi, MD

Director of Dermatopathology

Professor of Pathology and Dermatology

University of Washington Medical Center

**“The Evolution of American Dermatopathology and its European Roots—
What Can We Learn From History?”**

Fellows' Case Presentations

4:00 p.m. – 6:00 p.m.

Grand Ballroom C/D

Course Director: Roger H. Weenig, MD, Associated Skin Care Specialists

2 hours CME credit

The Continuing Education and Research Committee has selected 12 of the outstanding submissions in the Fellows in Dermatopathology abstract category to be presented orally. Abstract sessions will have a mix of case reports, clinical studies and basic science presentations.

Time	Title	Speaker
4:00 – 4:10 p.m.	Fluorescence <i>in-situ</i> Hybridization (FISH) Analysis of Atypical Melanocytic Proliferations and Melanoma of Young Patients	Charay Jennings, MD, PhD
4:10 – 4:20 p.m.	Cutaneous Angiosarcoma (AS) Arising in Massive Localized Lymphedema (MLL) of the Morbidly Obese: A Report of Five Cases and Review of the Literature	Wonwoo Shon, DO
4:20 – 4:30 p.m.	Increased Ki-67 Proliferation Index and CD117 Expression in Mixed- Versus Pure-Desmoplastic Melanoma	Daniel Miller, MD
4:30 – 4:40 p.m.	Dilated Lymphatic Vessels in Tufted Angioma: a Potential Source of Diagnostic Confusion	Ashley Mason, MD
4:40 – 4:50 p.m.	P16 Immunohistochemistry Does Not Reliably Distinguish Desmoplastic Melanomas From Sclerosing Nevi	Elen Blochin, MD, PhD
4:50 – 5:00 p.m.	Role of Corticotropin-releasing Hormone and Its Receptor in the Development of Dermatofibroma	Blazej Zbytek, MD, PhD
5:00 – 5:10 p.m.	Cellular Neurothekeoma: Analysis of 31 Cases Emphasizing Atypical Histologic Features	Jason Stratton, MD
5:10 – 5:20 p.m.	Cutaneous Involvement of Plasma Cell Neoplasms	Liaqat Ali, MD
5:20 – 5:30 p.m.	Endocrine Mucin-producing Sweat Gland Carcinoma: an Institutional Review of Five Cases	Shanon Lacy, DO
5:30 – 5:40 p.m.	Primary Cutaneous Rhabdomyosarcomas and Rhabdomyosarcomatous Differentiation of Cutaneous Lesions: A Series of 5 Cases	Rebecca Shanesmith, MD
5:40 – 5:50 p.m.	The Histopathology of Measles: An Update	Harleen Sidhu, MD
5:50 – 6:00 p.m.	Transepidermal Elimination in Cutaneous Leishmaniasis: a Multiregional Study	Sarah Karram, MD

Upon completion of this session, participants should be able to:

- Identify various clinical and basic science topics within dermatopathology.
- Exemplify and promote exchange of new ideas and concepts within the field of dermatopathology.
- Describe innovative investigative studies and tools pertaining to bench and translational research.
- Compare unique pathological perspectives and concepts as they relate to individual and groups of cases.

Evening Slide Symposium

6:15 p.m. – 9:30 p.m.

Grand Ballroom C/D

Course Director: Klaus J. Busam, MD,
Memorial Sloan-Kettering Cancer Center

With Audience
Response
System

3.25 hours CME credit

View the Evening Slide Symposium cases on the ASDP Web site (www.asdp.org).

In this traditionally popular symposium, a five-member panel will present 15 microscopically challenging cases. An in-depth discussion by the panel will focus on the histological and clinicopathological aspects of each case. A relaxed and educationally stimulating atmosphere is planned.

Audience participation is encouraged, via an audience response system, and casual attire is expected. Complimentary soda and snacks will be served. Each meeting participant will receive one complimentary drink ticket towards a glass of beer or wine. Cash bar will be available.

Glass slides will be available for viewing during the meeting in the Aspen room.
Case summaries are on the next page.

Faculty:

Steven D. Billings, MD
Cleveland Clinic

Maxwell A. Fung, MD
University of California, Davis Medical Center

Jacqueline M. Junkins-Hopkins, MD
Johns Hopkins University

Lori Lowe, MD
University of Michigan

Melissa Pulitzer, MD
Memorial Sloan-Kettering Cancer Center

Upon completion of this course, participants should be able to:

- Demonstrate an approach toward diagnosis of various challenging skin biopsies.
- Generate clinically relevant differential diagnoses.
- Differentiate clinical and histological features of interesting, difficult, and rare disorders of the skin.

Evening Slide Symposium Case Summaries

Case 1

A 50-year-old male with multiple medical problems including hypertension, diabetes, chronic renal insufficiency, liver disease, and history of intravenous drug abuse developed a new onset cutaneous eruption.

Case 2

A 15-year-old female with fever, arthralgia, and leukocytosis developed a faint erythematous eruption.

Case 3

A 53-year-old male with graft vs. host disease following hematopoietic stem cell transplant for acute lymphocytic leukemia developed scattered skin lesions.

Case 4

A 49-year-old woman with "R/O cyst" on the neck.

Case 5

An 86-year-old man with an itchy 10 x 5 mm pink plaque on the left upper back, previously treated by his dermatologist with triamcinolone 0.1% cream. Previous biopsy reported as "atypical keratinizing squamous cells with perineurial infiltration."

Case 6

A 29-year-old woman with history of bullae and indurated red plaques on forearms and thighs. History of pulmonary disease. R/O spongiotic dermatitis, SLE, bullous pemphigoid. Direct immunofluorescence testing was negative.

Case 7

A 70-year-old previously healthy male presents with recent onset of disseminated ecchymotic patches and bruise-like plaques.

Case 8

A 63-year-old male with a history of stem cell transplant for acute myeloid leukemia presents with scattered, rare follicular papules and nodules on trunk and extremities.

Case 9

A 52-year-old male, under treatment for stage IV melanoma, developed rapidly growing keratotic tumors and keratosis-pilaris-like papules on face, chest, back, and extremities.

Case 10

A 77-year-old woman presented with a nodule on the arm.

Case 11

A 51-year-old man with a 2.5 cm subcutaneous mass on the leg.

Case 12

A 4-year-old girl presented with a flank mass.

Case 13

Rule out "infection vs. vasculitis" in patient with RA.

Case 14

Ulcerating tumor on tongue: rule out "squamous cell carcinoma."

Case 15

A 50-year-old with lesion on forehead. No other rash or medical problems.

Sunday, October 23

Unless noted otherwise, all session rooms are located on the 2nd floor.

6:30 a.m. – 8:00 a.m.	Continental Breakfast	Grand Ballroom Foyer
6:30 a.m. – 10:00 a.m.	Poster Session #2 Viewing	Grand Ballroom A/B
6:30 a.m. – Noon	Registration and Information	Grand Ballroom Foyer
6:30 a.m. – Noon	Speaker Ready Room	Madrona
6:45 a.m. – 8:30 a.m.	Board of Directors and Committee Chair Roundtable Meeting	Diamond A/B, 1st Floor
7:00 a.m. – 8:15 a.m.	Consultation in Dermatopathology 400 Panniculitis and Other Puzzles <i>Maxwell A. Fung, MD</i>	Juniper
	Consultation in Dermatopathology 401 Update on Dermal Dendritic Melanocytic Proliferations <i>Artur Zembowicz, MD, PhD</i>	Douglas
	Consultation in Dermatopathology 402 Selected Cases in Pediatric Dermatopathology <i>Sylvie Fraitag, MD</i>	Cedar
7:30 a.m. – 8:30 a.m.	Oral Abstract Session #3	Grand Ballroom C/D
8:30 a.m. – 8:45 a.m.	Physician-in-Training Abstract & Poster Awards Presentation	Grand Ballroom C/D
8:30 a.m. – 9:45 a.m.	Consultation in Dermatopathology 403 Cutaneous Lymphocytic Infiltrates: Your Cases and Mine <i>Joan Guitart, MD</i>	Juniper
	Consultation in Dermatopathology 404 Basic Alopecia <i>Shawn E. Cowper, MD</i>	Douglas
	Consultation in Dermatopathology 405 Unusual Cutaneous Lymphomas with Clinical Correlation <i>Jinah Kim, MD, PhD</i>	Cedar
8:45 a.m. – Noon	Short Course IV: What Is It, Really? <i>Course Director: Lawrence E. Gibson, MD, Mayo Clinic, Rochester</i>	Grand Ballroom C/D
10:00 a.m. – Noon	Poster Session #2 Dismantle	Grand Ballroom A/B
10:15 a.m. – 11:30 a.m.	Consultation in Dermatopathology 406 Oral Pathology <i>Molly A. Hinshaw, MD</i>	Juniper
	Consultation in Dermatopathology 407 Diagnostic Pearls and Pitfalls in Sentinel Lymph Nodes for Melanoma: Clinical Implications <i>Victor G. Prieto, MD, PhD</i>	Douglas
	Consultation in Dermatopathology 408 Lessons I Have Learned From Difficult Cases <i>Philip E. LeBoit, MD</i>	Cedar
Closes at 11:00 a.m.	Slide Library	Willow
Closes at 11:00 a.m.	Slide Viewing from Evening Slide Symposium	Aspen
Noon	ASDP 48th Annual Meeting Concludes	

Saturday, October 22

Oral Abstract Session #3

7:30 a.m. – 8:30 a.m.

Grand Ballroom C/D

Course Moderator: Leslie Robinson-Bostom, MD, Rhode Island Hospital

1 hour CME credit

Abstracts presented in Oral Abstract Session #3 can be found in the “Abstract & Handout” book. Abstracts are listed in the order of presentation.

Time	Title	Speaker
7:30 - 7:40 a.m.	Melanocytic Nevi with Atypical Epithelioid Cell Component: Clinical, Histopathologic and Fluorescence <i>in situ</i> Hybridization Findings	Pedram Pouryazdanparast, MD
7:40 - 7:50 a.m.	PHLDA1 (TDAG51): Patterns of Positivity in Basal Cell Carcinoma Not Just a Marker for Trichoepithelioma	Iwei Yeh, MD, PhD
7:50 - 8:00 a.m.	Differential Distribution and CD123-immunoreactivity of Plasmacytoid Dendritic Cells in Discoid Lupus Erythematosus and Lichen Planopilaris	Jeave Reserva, BS
8:00 - 8:10 a.m.	SOX-10 Expression in Cutaneous Myoepitheliomas, the Stroma of Cutaneous Mixed Tumors and Normal Eccrine Glands	Ange Naujokas, DO
8:10 - 8:20 a.m.	Differential Expression of Stem Cell Markers in Lichen Planopilaris and Alopecia Areata	Natasha Atanaskova Mesinkovska, MD, PhD
8:20 - 8:30 a.m.	Metastatic Atypical Fibroxanthoma	Wei-Lien (Billy) Wang, MD

Upon completion of this session, participants should be able to:

- Identify various clinical and basic science topics within dermatopathology.
- Exemplify and promote exchange of new ideas and concepts within the field of dermatopathology.
- Describe innovative investigative studies and tools pertaining to bench and translational research.
- Compare unique pathological perspectives and concepts as they relate to individual and groups of cases.

Short Course IV: What Is It, Really?

With Audience Response System

8:45 a.m. – Noon

Grand Ballroom C/D

Course Director: Lawrence E. Gibson, MD,
Mayo Clinic, Rochester



3.25 hours CME credit

In this course various inflammatory diseases of the skin will be presented. The topics selected are known to create confusion in terms of correct diagnosis and clinical correlation. Attendees will gain a better knowledge of these diseases and diagnostic accuracy will be improved. The relevance and correct clinical correlation of these diseases will be mastered after attending the course.

Faculty and Course Outline:

8:45 – 8:50 a.m. **Introduction**
Lawrence E. Gibson, MD
Mayo Clinic, Rochester

8:50 – 9:40 a.m. **Cutaneous Amyloid**
Ahmet Dogan, MD
Mayo Clinic College of Medicine

9:40 – 10:15 a.m. **Hemophagocytic Lymphohistiocytosis**
Roger H. Weenig, MD
Associated Skin Care Specialists

10:15 – 10:50 a.m. **The CPC of Macular Erythematous Inflammatory Eruptions**
Clay J. Cockerell, MD
University of Texas Southwestern Medical Center

10:50 – 11:25 a.m. **Folliculitis Decalvans and Acne Keloidalis Nuchae**
Leonard C. Sperling, MD
Uniformed Services University

11:25 – 11:55 a.m. **Tropical Diseases from Brazil**
Gilles Landman, MD
Federal University of São Paulo

11:55 a.m. – Noon **Closing Remarks**
Lawrence E. Gibson, MD
Mayo Clinic, Rochester

Upon completion of this course, participants should be able to:

- Distinguish between skin diseases that are easily misdiagnosed or confused with others.
- Identify key clinical and pathologic features in order to provide the best accuracy of diagnosis.

Index of Faculty

A

Afshar, Maryam 26
 Ali, Liaqat 42
 Al-Zaid, Tariq 33
 Argenyi, Zsolt B. 15, 22, 37, 41
 Atanaskova Mesinkovska, Natasha 28, 46

B

Bahrami, Soon 16
 Bain, Earl E. 26
 Barnhill, Raymond L. 17, 26, 32
 Barrett, Terry L. 16
 Bastian, Boris C. 32, 34
 Bergfeld, Wilma F. 19, 35
 Bhawan, Jag 17
 Billings, Steven D. 16, 17, 19, 25, 29, 35, 43
 Binder, Scott 32
 Blochin, Elen 42
 Bravo, Francisco G. 17
 Bridges, Alina 24
 Brinster, Nooshin K. 16
 Busam, Klaus J. 17, 24, 29, 34, 43

C

Carlson, J. Andrew 16
 Cassarino, David S. 15, 16, 23
 Chakrapani, Andrea 27
 Clarke, Loren E. 19, 24, 33, 35
 Cockerell, Clay J. 17, 47
 Cohen, Lisa M. 25
 Cook, Deborah L. 19, 35
 Cooper, Lynn D. 16
 Cowper, Shawn E. 17

D

Dabiri, Salma 33
 Deng, April C. 19, 35
 DiCaudo, David J. 15, 22
 Dogan, Ahmet. 47

E

Elston, Dirk M. 16

F

Farah, Ramsay S. 19, 35
 Feldman, Andrew L. 29
 Ferringer, Tammie C. 16, 24
 Fox, Melanie 27
 Freitag, Sylvie 17
 Frieling, Gretchen 33
 Fung, Maxwell A. 17, 43

G

Gaudi, Sudeep 26
 Gavino, Alde Carlo 27
 Gerami, Pedram 15, 22, 26, 34
 Gibson, Lawrence E. 15, 22, 23, 29, 47
 Glass, L. Frank 32
 Glusac, Earl J. 25
 Goldenberg, Gary 16
 Golitz, Loren E. 16
 Gottlieb, Geoffrey J. 16
 Grayson, Wayne 17
 Greenblatt, Danielle 33
 Guitart, Joan 17
 Guo, Ying 19, 35
 Gupta, Kapil 17

H

Hall, L. David 27
 Haws, Andrea 27
 Helm, Thomas N. 18, 19, 22, 35
 Hernandez, Amanda 27
 Hick, Jeffrey 27
 Hinshaw, Molly A. 17
 Hoang, Mai P. 15, 22, 23
 Hood, Antoinette F. 25
 Hossler, Eric W. 26
 Hung, Tawny 33
 Hurt, Mark A. 15, 22

I

Ioffreda, Michael D. 19, 35

J

Jacobson-Dunlop, Erick 27
 Jacobson, Mark 16
 Jaworsky, Christine 27
 Jennings, Charay 42
 Jones, Daniel M. 34
 Junkins-Hopkins, Jacqueline M. 15, 22, 43

K

Kamino, Hideko 16
 Karai, Laszlo J. 36
 Karram, Sarah 42
 Kim, Jinah 15, 17, 23
 Ko, Jennifer 27
 Kutzner, Heinz H. 19, 32, 35, 40, 41

L

Lacy, Shanon 42
 Lambert, W. Clark 15, 22
 Landman, Gilles 47
 Lazar, Alexander J.F. 34
 LeBoit, Philip E. 17, 32
 Lee, Dong-Youn 26

Lin, Lin 19, 35
 Lowe, Lori 43
 Lupton, George P. 17

M

Macdonald, James 27
 Mahalingam, Meera 16, 19, 35
 Martin, Blanca 26
 Mason, Ashley 42
 McCalmont, Timothy H. 17, 25, 40
 McQuitty, Elizabeth 33
 Mehregan, Darius R. 24
 Miedema, Jayson 27
 Milde, Petra 40
 Miller, Daniel 42
 Mutasim, Diya F. 19, 24, 35

N

Naujokas, Ange 46
 Nguyen, Thuy Linh 28

P

Patel, Rajiv M. 16, 19, 22, 24, 25, 35
 Paugh, Holly 33
 Peters, Margot S. 24, 29
 Piepkorn, Michael W. 32
 Piliang, Melissa P. 19, 22, 25, 35
 Poeschl, M. Drake 28
 Pouryazdanparast, Pedram 46
 Prieto, Victor G. 17
 Pulitzer, Melissa 43

R

Rapini, Ronald P. 19, 35
 Rashtak, Shadi 27
 Reddy, Vijaya B. 40
 Reserva, Jeave 46
 Robinson-Bostom, Leslie 17
 Ruben, Beth S. 16, 25

S

Sangueza, Omar P. 17
 Schaefer, Jochen T. 16
 Schulman, Joshua 27
 Selim, M. Angelica 16
 Shanesmith, Rebecca 42
 Shon, Wonwoo 27, 42
 Sidhu, Harleen 42
 Singh, Rajendra 36
 Smith, Kathleen J. 17
 Solomon, Garron 24
 Sperling, Leonard C. 17, 47
 Stewart, Campbell 27
 Stratton, Jason 42
 Subtil, Antonio 16
 Sundram, Uma 15, 22

Index of Faculty

V

Vasquez, Juan 33

W

Walsh, Noreen M.G. 40
Walsh, Sarah N. 19, 35
Wang, Wei-Lien (Billy). 46
Weenig, Roger H. 42, 47
Weyers, Wolfgang. 40
Whitling, Nicholas 26
Wong, Alexander 33

Y

Yeh, Iwei 46

Z

Zbytek, Blazej 42
Zembowicz, Artur 17, 26

